

## Case 361 : Narrative

Case Vehicle (A): 1999 Jeep
Type: Cherokee, 4-door SUV, 4x4
Driver: 23-year-old male
CDC: 12-FLEE-5

### SITUATION

[1](#) [2](#) On a clear night, case vehicle (A) was traveling south at an unknown speed on a northbound one-way, five-lane, asphalt road, in a residential area. The roads were dry, it was dark and artificially lighted, and the speed limit was 35 mph (56 kph). The driver was intoxicated and the vehicle exited the east edge of the road and [3](#) struck a 30-cm diameter light pole that was located two meters east of the road edge. The vehicle was towed from the scene due to damage and the driver was taken to a local hospital where a blood test revealed a blood alcohol level of .28%. He was transferred to a trauma center eight days later.

### GENERAL VEHICLE DAMAGE AND ESTIMATED CRASH SEVERITIES

[4](#) The direct damage to the front of case vehicle (A) from impact with the pole was primarily to the left portion of the front bumper. [5](#) The damage began at the left-front bumper corner and extended 34-cm to the right, resulting in 26-percent vehicle overlap. [6](#) The maximum rearward crush of 110 cm occurred at the left-front bumper corner. Using the WinSMASH crash-reconstruction program and c-values measured for [7](#) [8](#) [9](#) [10](#) [11](#) [12](#) case vehicle (A), the following impact severity was calculated for the frontal impact with the pole.

		Calculated Velocity Change - kph (mph)		
Vehicle	Variable	Total	Longitudinal	Latitudinal
Case Vehicle (A)	delta V	62 (39)	-62 (-39)	0 (0)

## DESCRIPTION OF DAMAGE TO CASE VEHICLE (A)

### Exterior

[13](#) In the front, the bumper and grille were crushed rearward into the engine compartment, [14](#) the bumper cover was almost completely separated from its attachments, and both headlight assemblies were broken. [15](#) The left side of the hood was crushed rearward and pushed up, and the right side of the hood was pulled to the left. The damaged hood latch was jammed, [16](#) [17](#) both hood hinges were deformed but not separated, and the rear edge of the hood was elevated in the center and left side and [18](#) it contacted and cracked the center and left portions of the windshield. [19](#) [20](#) There was also about 20% bond separation at the left and right lower corners of the windshield.

[21](#) [22](#) On the left side, the fender was crumpled, separated from the frame near the A-pillar, and pulled out. [23](#) The left-front wheel was pushed rearward into the driver floor area, resulting in a 65-cm reduction in the left wheelbase and restriction of the wheel from rotating. The hubcap was broken and there was a cut in the tire tread. [24](#) The upper portion of the left A-pillar was pushed rearward into a nearly vertical orientation, [25](#) causing remote buckling of the roof above the driver door. The lower portion of the A-pillar and the upper and lower portions of the B- and C-pillars were also deformed. [26](#) The driver door was separated from the B-pillar, the forward portion of the door was detached from its hinges, the door window frame was bent, and the door glazing was broken out. [27](#) The left-rear door was jammed closed and the door window frame was bent out. [28](#) There was no damage to the left quarter panel, no damage to the upper or

lower portions of the left D-pillar, and there was no other glazing damage on the left side. [29](#) There was no damage to the left-rear wheel.

[30](#) [31](#) On the right side, the front fender was deformed and moved to the left. [32](#) The right-front wheel was not visibly damaged but the tire was flat. [33](#) There was no damage to the right-rear wheel but the right wheelbase was increased 8 cm. [34](#) There was no damage to the right-side doors and there was no damage to the right-side glazing. [35](#) The right-front window was rolled down but it was not broken. [36](#) There was no damage to the upper or lower portions of the right A-, B-, C- and D-pillars.

[37](#) There was no damage to the rear of case vehicle (A).

## Interior

[38](#) This vehicle was equipped with steering-wheel and dash-mounted frontal-impact airbags, which deployed during the frontal impact. [39](#) There was no damage to, or contact marks on, the steering-wheel airbag. [40](#) [41](#) The steering wheel was rotated 180 degrees from the normal position, and the upper half of the steering-wheel rim, which was at the bottom, was deflected forward approximately 10 cm. [42](#) In addition, the steering column was rotated down and to the left.

[43](#) [44](#) [45](#) In the driver area, the roof and headliner were buckled, the roof siderail was displaced, and the upper portion of the left A-pillar was deformed and displaced to the rear. [46](#) There was a scuffmark on, and a cut in, the fabric of the sunvisor, and there were small hairs embedded in the fabric. [47](#) The upper portion of the instrument panel was damaged and displaced up and to the rear, and [48](#) the plastic that covers the speedometer and engine gauges was broken. [49](#) The mid portion of the instrument panel was also damaged and displaced to the rear, the plastic was broken, [50](#) and there

were scuffmarks on the mid panel to the left of the steering column. [51](#) The driver knee bolster was displaced to the rear and there were scuffmarks on both sides of the steering column. [52](#) The windshield-wiper lever was pushed forward, and the plastic vent outlets were broken. [53](#) The floor and toe pan in the driver area were displaced up and to the rear, and the brake pedal was bent to the left. [54](#) The left-front tire was visible through a separation in the floor pan, and the kickpanel area and parking-brake pedal were damaged. [55](#) The interior of the driver door was damaged, the plastic on the driver-door armrest was cracked, and the door hardware and glass were broken. The driver seat was jammed in the full-rear position, and [56](#) [57](#) [58](#) there was a hole in the rear of the seatback caused by loading from the mountain bike that was lying across the rear seats.

[59](#) In the center-front area, the roof was buckled and the windshield was cracked, but the rearview mirror was undamaged. [60](#) The vertical console was displaced rearward and the plastic cover over the radio and knobs was broken and separated from its attachments.

In the right-front seating area, there was no damage to the roof, to the windshield header, or to the right A-pillar. [61](#) There were cracks in the windshield that radiated across the right portion of the windshield and the upper instrument panel cover was detached from the panel. [62](#) There was no damage to the dash-mounted frontal-impact airbag, although debris was thrown on the fabric resulting in brown stains on the center portion of the airbag. [63](#) The glove box was not damaged and there was no damage to floor. [64](#) [65](#) The right-front seatback was deflected forward from loading by the mountain bike.

[66](#) In the rear-seating area, the seatback had been folded down to accommodate the mountain bike.



[67](#) [68](#) The following intrusions were noted and measured:

Location	Component	Distance (cm)	Direction
left front	toe pan	62	to rear
	left-front tire/wheel	36	to rear
	instrument panel	24	to rear
	floor	20	up
	A-pillar	13	to rear
right front	instrument panel	18	to rear

## OCCUPANT KINEMATICS AND INJURIES

[69](#) [70](#) The 6-ft, 1-in, 180-lb, 23-year-old male driver was not using the available three-point belt, and the steering-wheel airbag deployed during the frontal impact with the pole. [71](#) [72](#) [73](#) [74](#) [75](#) There were no indications of belt use on the D-ring, the belt webbing, or the continuous loop.

During the frontal impact, the unbelted male driver moved forward and slightly to the left relative to the vehicle interior, [76](#) into the airbag. [79](#) [40](#) [41](#) He sustained multiple fractures to the right 3rd and 4th ribs and the left 1st through 4th ribs, resulting in a right pneumothorax and a right pulmonary contusion, probably from contact with the upper steering-wheel rim through the airbag, as evidenced by significant deformation of the upper rim of the steering wheel. [81](#) He sustained numerous pelvic injuries, including a comminuted fracture to the right acetabulum with subluxation, a fracture of the left sacral ala with occlusion to the right pudendal artery, a fracture to the left superior and inferior pubic rami, and a right pubic ramus fracture, probably from knee contact with the knee bolster, as evidenced by scuffmarks and damage to both sides of the bolster. He sustained abrasions and lacerations to the left knee, probably from contact with the

knee bolster. [77](#) [78](#) He sustained an abrasion to the posterior aspect of the right side of the neck, contusions to the posterior aspect of the right shoulder and the right-upper arm, a fracture to the posterior aspect of the 10th rib, a non-displaced fracture to the right acromion, a contusion to the right flank, right transverse process fractures to T10 through T12 and L1 through L3, and a hematoma to the right hip and gluteal musculature, probably from contact by the mountain bike that was lying across the rear seat.

[80](#) He sustained a contusion to the dorsal aspect of the right hand, possibly from contact with the instrument panel. He sustained a contusion to the left upper arm from an unknown source. [82](#) [83](#) [84](#) He sustained several foot injuries, including fractures to the left medial malleolus, the left 5th proximal phalanx, and the left 5th metatarsal, probably from foot contact with the toepan and/or the left-front wheel. He also sustained a contusion to the medial aspect of the right foot, probably from foot contact with the toepan. [85](#) He sustained abrasions, contusions, and a large 3-cm x 10-cm laceration to the left shin, probably from leg contact with the kickpanel, or possibly from leg contact with the parking-brake pedal. [86](#) He sustained a contusion and abrasion to the right shin, probably from leg contact with the right portion of the knee bolster, as evidenced by scuffmarks on the bolster.

The following table and attached drawing [87](#) summarize the injuries for the unbelted driver.

Occupant: Driver	Age: 23 years	Gender: Male		
Restraints: Steering-wheel airbag	Stature: 185 cm (6 ft, 1 in)	Mass: 82 kg (180 lb)		
Injury Description	A.I.S.	Injury Source		
—	—	Definite	Probable	Possible
Abrasion, right posterior neck	1	—	Loose cargo (bike)	—
Contusion, right posterior shoulder and right upper arm	1	—	Loose cargo (bike)	—
Fractures to 3rd and 4th right ribs with right pneumothorax, and 1st through 4th left ribs	4	—	Upper steering-wheel rim	—
Right posterior 10th rib fracture	1	—	Loose cargo (bike)	—
Right pulmonary contusion	3	—	Airbag	—
Non-displaced fracture, right acromion	2	—	Loose cargo (bike)	—
Contusion, right dorsal hand	1	—	—	Instrument panel
Contusion, left upper arm	1	Unknown	—	—
Right T10-12 transverse process fracture	2	—	Loose cargo (bike)	—
Right L1-3 transverse process fracture	2	—	Loose cargo (bike)	—
Contusion, right flank	1	—	Loose cargo (bike)	—
Comminuted fracture, right acetabulum with subluxation	3	—	Knee bolster	—
Fracture, left sacral ala	3	—	Knee bolster	—
Occlusion to the right pudendal artery	3	—	Knee	—

			bolster	
Fracture, left superior and inferior pubic rami	2	—	Knee bolster	—
Right hip joint hematoma and gluteal musculature	1	—	Loose cargo (bike)	—
Fracture, right pubic ramus	2	—	Knee bolster	—
Abrasion and lacerations, left knee	1	—	Knee bolster	—
3x10-cm laceration, abrasion and contusion to left shin	1	—	Kickpanel	Parking- brake pedal
Fracture, left medial malleolus	2	—	Toepan, left-front tire	—
Fracture, 5th proximal phalanx of the left foot	1	—	Toepan, left-front tire	—
Fracture, 5th metatarsal of the left foot	2	—	Toepan, left-front tire	—
Contusion and abrasion, right shin	1	—	Knee bolster	—
Contusion, medial aspect of the right foot	1	—	Toepan	—
Maximum A.I.S. Level	4	—	—	—
Injury Severity Score	29	—	—	—
.28 percent blood alcohol	—	—	—	—

CASE NO.: 361-03

CASE VEHICLE: 1999 Jeep

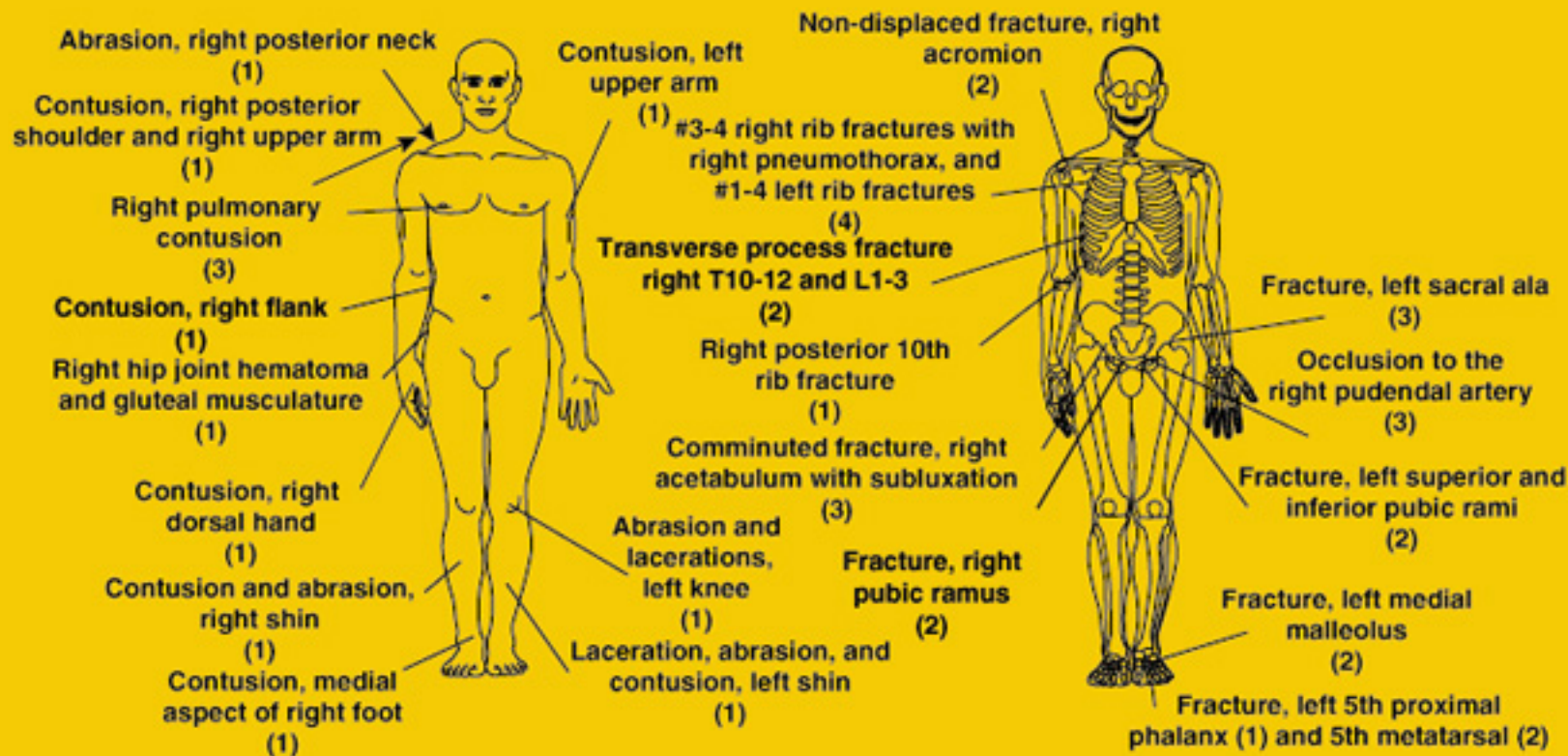
TYPE: Cherokee, 4-door SUV

OCCUPANT: (Driver) 23-year-old male

STATURE: 185 cm (6 ft, 1 in) MASS: 82 kg (180 lb)

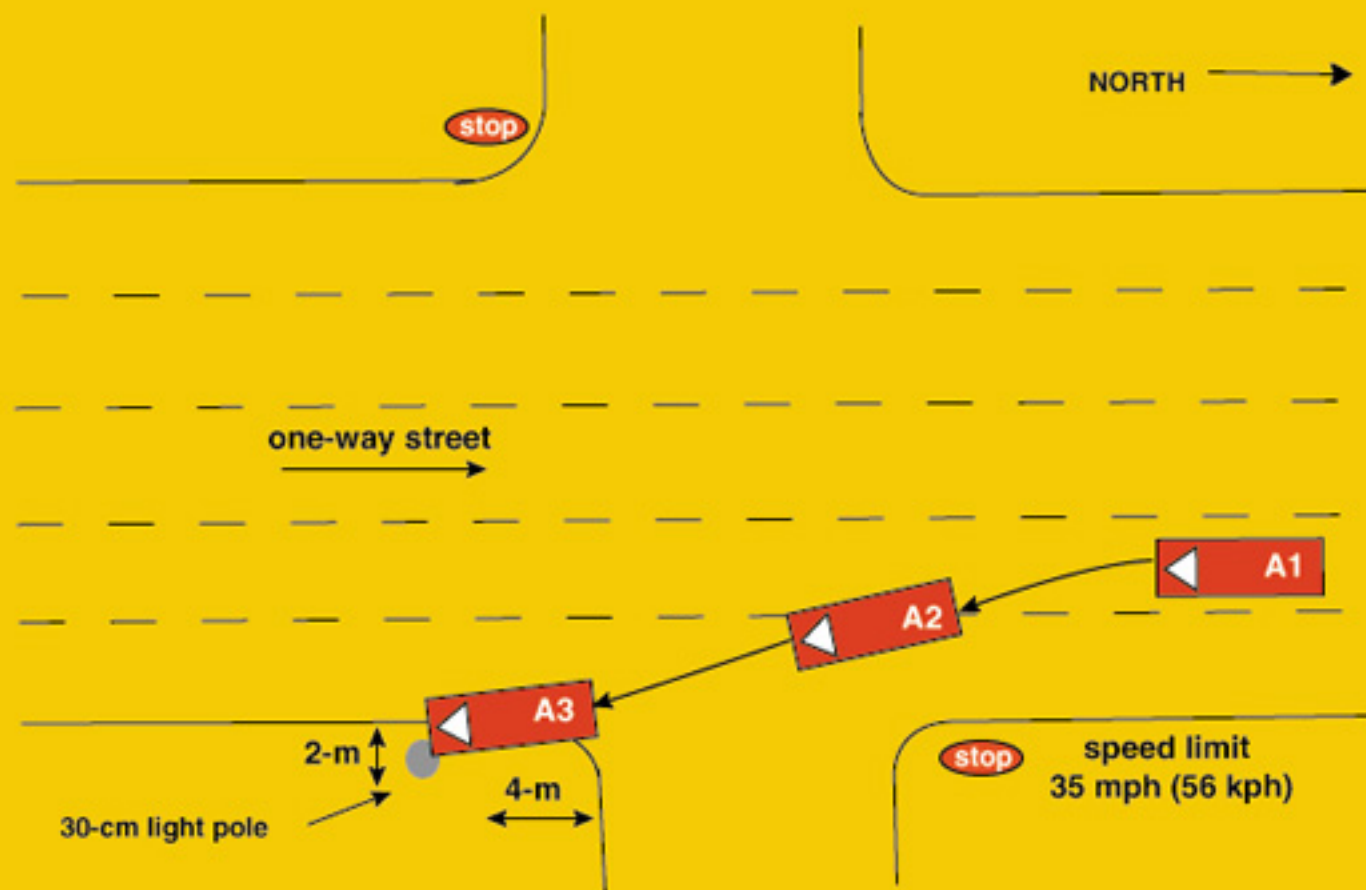
RESTRAINTS: Steering-wheel airbag

SEVERITY: MAIS - 4 ISS - 29  
.28% blood alcohol



Case No.: 361-03  
Case Veh. (A): 1999 Jeep  
Type: Cherokee, 4-door SUV, 4x4  
Driver: 23-year-old male

Weather: Clear  
Road Surface: Dry  
Road Construction: Asphalt  
Light Condition: Dark/lighted



# Vehicle Report

## General

## Conditions

Variable Number and Name	Code Value	Code Description	Other Options
V206 — Urban/Rural Area	1	Urban	<a href="#">more</a>
V207 — Limited Access Highway	0	No	<a href="#">more</a>
V208 — Road Total Lanes	4	4 lanes or more	<a href="#">more</a>
V209 — Intersecting Road Total Lanes	8	Not applicable	<a href="#">more</a>
V210 — Road Surface Type	1	Asphalt	<a href="#">more</a>
V211 — Road Defects	0	No	<a href="#">more</a>
V212 — Construction Zone	0	No	<a href="#">more</a>
V213 — Road Alignment Vertical Plane	1	Level	<a href="#">more</a>
V214 — Road Alignment Horizontal Plane	1	Straight	<a href="#">more</a>
V215 — Surface Covering	10	Dry	<a href="#">more</a>
V216 — Visibility Limitation	0	None	<a href="#">more</a>
V217 — Visibility Obstruction	0	None	<a href="#">more</a>
V218 — Speed Limit	2	56-60 km/h .. 35 mph	<a href="#">more</a>
V219 — Precipitation Type	0	None	<a href="#">more</a>
V220 — Precipitation Rate	8	Not applicable	<a href="#">more</a>
V221 — Temperature	9	Unknown	<a href="#">more</a>
V222 — Crosswind	9	Unknown	<a href="#">more</a>
V223 — Light Conditions	4	Dark, lighted	<a href="#">more</a>
V224 — Mechanical Malfunction Mention	0	No	<a href="#">more</a>
V225 — Case Vehicle and Object	1	Yes	<a href="#">more</a>

V226 — Case Vehicle Rollover	0	No	<a href="#">more</a>
V227 — Case Vehicle Ran Off Roadway	1	Yes	<a href="#">more</a>
V228 — Moving Case Vehicle/Contacted Moving Vehicle	0	No	<a href="#">more</a>
V229 — Case Vehicle/Contacted Stopped Vehicle	0	No	<a href="#">more</a>
V230 — Stopped Case Vehicle/Contactd Vehicle	0	No	<a href="#">more</a>
V231 — Total Vehicles Hit By Case Vehicle	0	0 vehicles	<a href="#">more</a>
V232 — Any Fire in Crash	0	No	<a href="#">more</a>
V233 — Max Police Severity-PAR	7	Non-Fatal Injury, Severity Unknown	<a href="#">more</a>
V234 — Driver Alcohol Involvement	1	Had been drinking	<a href="#">more</a>
V235 — Driver Alcohol BAC	28	—	—
V236 — Driver Impairment Mention	0	No	<a href="#">more</a>
V237 — Driven/Towed From Scene	2	Towed Due to Damage	<a href="#">more</a>



## Other Vehicle

Variable Number and Name	Code Value	Code Description	Other Options
V301 — Other Vehicle VIN	none	—	—
V302 — Other Vehicle Manufacturer/Body Code	99898	—	—
V303 — Other Vehicle Manufacturer	998	No Other Vehicle	<a href="#">more</a>
V304 — Other Vehicle Body Code	98	No Other Vehicle	<a href="#">more</a>
V305 — Other Vehicle Make/Model	0000	No other vehicle	<a href="#">more</a>
V306 — Other Vehicle Model Year	9999	No other vehicle	<a href="#">more</a>
V307 — Other Vehicle Mass	999998	No other vehicle	<a href="#">more</a>
V308 — Other Vehicle Number	8	No other vehicle	<a href="#">more</a>
V309 — Other Vehicle Number of Occupants	98	No other vehicle	<a href="#">more</a>
V310 — Other Vehicle Traveling Speed	999	Unknown	<a href="#">more</a>
V311 — Highest Police Injury Severity	8	Unoccupied Vehicle	<a href="#">more</a>
V312 — Other Vehicle Type	98	No Other Vehicle	<a href="#">more</a>
V313 — Other Vehicle Wheelbase (cm)	998	No other vehicle	<a href="#">more</a>
V314 — Average Track Width	999	Unknown	<a href="#">more</a>
V315 — Overall Length	999	Unknown	<a href="#">more</a>
V316 — Overall Width (OAW)	999	Unknown	<a href="#">more</a>
V317 — Front Overhang (FOH)	999	Unknown	<a href="#">more</a>
V318 — Rear Overhang (ROH)	999	Unknown	<a href="#">more</a>
V319 — Undeformed End Width (UEW)	999	Unknown	<a href="#">more</a>
V320 — Engine Displacement	9.9 l	—	—
V321 — Engine: Number of Cylinders	99	Unknown	<a href="#">more</a>
V322 — Direct Damage Length (DDL)	999	Unknown	<a href="#">more</a>

V323 — Front-End Overlap % (FEO)	99	Missing or Not applicable	<a href="#">more</a>
V324 — Vehicle Overlap % (VOL)	99	Missing or Not applicable	<a href="#">more</a>

## Case Vehicle

### General

Variable Number and Name	Code Value	Code Description	Other Options
V401 — VIN	1J4FF68S3XL5	—	—
V402 — Manufacturer/Body Code	15214	—	—
V403 — Vehicle Manufacturer	152	Kaiser/Jeep	<a href="#">more</a>
V404 — Vehicle Body Code	14	—	—
V405 — Make/Model Code	3405	Cherokee	<a href="#">more</a>
V406 — Model Year	1999	—	—
V407 — Vehicle Mass	001380 kg	—	—
V408 — Odometer Reading	888888	—	—
V409 — Number of Occupants	01	—	—
V410 — Traveling Speed	999	Unknown	<a href="#">more</a>
V411 — Body Type	21	Small utility (e.g. Jeep, Scout, Bronco)	<a href="#">more</a>
V412 — Stolen Vehicle	8	Not currently collected	<a href="#">more</a>
V413 — Body Structure	1	Body and frame	<a href="#">more</a>
V414 — Transmission Type	1	Automatic	<a href="#">more</a>
V415 — Transmission Lever Location	2	Console	<a href="#">more</a>
V416 — Steering	1	Power	<a href="#">more</a>
V417 — Brakes	1	Power	<a href="#">more</a>
V418 — Brake Type	2	Disc - front wheels	<a href="#">more</a>
V419 — Brake Anti-lock Device	1	Two-wheel	<a href="#">more</a>
V420 — Air Conditioning in Vehicle	8	Not currently collected	<a href="#">more</a>
V421 — Drive Type	3	Four wheel	<a href="#">more</a>
V422 — Dual Rear Wheels	0	No	<a href="#">more</a>
V423 — Original Restraint System	3	Airbag	<a href="#">more</a>

Type			
V424 — Equipped With Roll Bar	0	No	<a href="#">more</a>
V425 — Roof Type	1	Solid	<a href="#">more</a>
V426 — Wheelbase	258 cm	—	—
V427 — Anti-lacerative Glass	0	None	<a href="#">more</a>
V428 — Average Track Width	147 cm	—	—
V429 — Overall Length	420 cm	—	—
V430 — Overall Width (OAW)	176 cm	—	—
V431 — Front Overhang	070 cm	—	—
V432 — Rear Overhang	092 cm	—	—
V433 — Undeformed End Width (UEW)	153 cm	—	—
V434 — Engine Displacement	4.0 <i>l</i>	—	—
V435 — Engine: Number of Cylinders	06	—	—
V436 — Direct Damage Length (DDL)	034 cm	—	—
V437 — Front End Overlap % (FEO)	22	—	—
V438 — Vehicle Overlap % (VOL)	26	—	—

## Case Vehicle

## Damage

## Description

Variable Number and Name	Code Value	Code Description	Other Options
V501 — Maximum Crush - Front	110 cm	—	—
V502 — Maximum Crush - Right Side	000 cm	No crush (or less than 1 cm.)	<a href="#">more</a>
V503 — Maximum Crush - Rear	000 cm	No crush (or less than 1 cm.)	<a href="#">more</a>
V504 — Maximum Crush - Left Side	000 cm	No crush (or less than 1 cm.)	<a href="#">more</a>
V505 — Maximum Crush - Roof	000 cm	No crush (or less than 1 cm.)	<a href="#">more</a>
V506 — Maximum Crush - Other	000 cm	No crush (or less than 1 cm.)	<a href="#">more</a>
V507 — Are Events In Chronological Order	1	Yes	<a href="#">more</a>
V508 — Event 1 Impact Location	3	On Roadside	<a href="#">more</a>
V509 — Event 1 Impact Configuration	17	FRONT of case veh - object	<a href="#">more</a>
V510 — Event 1 Object/Vehicle Contacted	77	Sign post, utility pole, tree	<a href="#">more</a>
V511 — Event 2 Impact Location	8	No 2nd event	<a href="#">more</a>
V512 — Event 2 Impact Configuration	88	No 2nd event	<a href="#">more</a>
V513 — Event 2 Object/Vehicle Contacted	00	No object/vehicle contacted	<a href="#">more</a>
V514 — Event 3 Impact Location	8	No 3rd event	<a href="#">more</a>
V515 — Event 3 Impact Configuration	88	No 3rd event	<a href="#">more</a>
V516 — Event 3 Object/Vehicle Contacted	00	No object/vehicle contacted	<a href="#">more</a>
V517 — Event 4 Impact Location	8	No 4th event	<a href="#">more</a>
V518 — Event 4 Impact Configuration	88	No 4th event	<a href="#">more</a>

V519 — Event 4 Object/Vehicle Contacted	00	No object/vehicle contacted	<a href="#">more</a>
V520 — Event 5 Impact Location	8	No 5th event	<a href="#">more</a>
V521 — Event 5 Impact Configuration	88	No 5th event	<a href="#">more</a>
V522 — Event 5 Object/Vehicle Contacted	00	No object/vehicle contacted	<a href="#">more</a>
V523 — Event 6 Impact Location	8	No 6th event	<a href="#">more</a>
V524 — Event 6 Impact Configuration	88	No 6th event	<a href="#">more</a>
V525 — Event 6 Object/Vehicle Contacted	00	No object/vehicle contacted	<a href="#">more</a>
V526 — Event 7 Impact On Road	8	No 7th event	<a href="#">more</a>
V527 — Event 7 Impact Configuration	88	No 7th event	<a href="#">more</a>
V528 — Event 7 Object/Vehicle Contacted	00	No object/vehicle contacted	<a href="#">more</a>
V529 — Primary CDC Case Vehicle -event Number	1	Event 1	<a href="#">more</a>
V530 — Primary CDC Case Vehicle - impact speed	999	Unknown	<a href="#">more</a>
V531 — Primary CDC Case Vehicle - Estimated By	1	Investigator	<a href="#">more</a>
V532 — Primary CDC Case Vehicle -crush	110	—	—
V533 — Primary CDC Case Vehicle -clock #1	12	12 o'clock	<a href="#">more</a>
V534 — Primary CDC Case Vehicle letter 1 #1	06	F - Front	<a href="#">more</a>
V535 — Primary CDC Case Vehicle letter 2 #1	12	L - Left (Front or Rear)	<a href="#">more</a>
V536 — Primary CDC Case Vehicle letter 3 #1	05	E - Everything below belt line	<a href="#">more</a>
V537 — Primary CDC Case Vehicle letter 4 #1	05	E - Corner (extends from corner to = or < 16 in [410mm])	<a href="#">more</a>
V538 — Primary CDC Case Vehicle Extent #1	05	Extent 5	<a href="#">more</a>
V539 — Primary CDC Case Vehicle -CDC #1	12FLEE5	—	—

V541 — Primary CDC Case Vehicle letter 1 #2	00	Missing Data/Not applicable	<a href="#">more</a>
V542 — Primary CDC Case Vehicle letter 2 #2	00	Missing Data/Not applicable	<a href="#">more</a>
V543 — Primary CDC Case Vehicle letter 3 #2	00	Missing Data/Not applicable	<a href="#">more</a>
V544 — Primary CDC Case Vehicle letter 4 #2	00	Missing Data/Not applicable	<a href="#">more</a>
V545 — Primary CDC Case Vehicle Extent #2	00	Missing Data/Not applicable	<a href="#">more</a>
V546 — Primary CDC Case Vehicle -CDC #2	9800000	—	—
V547 — Primary CDC Contacted Vehicle - Impact Speed	998	Not Applicable	<a href="#">more</a>
V548 — Primary CDC Contacted Vehicle - Estimated By	1	Investigator	<a href="#">more</a>
V549 — Primary CDC Contacted Vehicle -crush	998	Not Applicable	<a href="#">more</a>
V550 — Primary CDC Contacted Vehicle -clock #1	98	Not Applicable	<a href="#">more</a>
V551 — Primary CDC Contacted Vehicle letter 1 #1	00	Missing Data/Not applicable	<a href="#">more</a>
V552 — Primary CDC Contacted Vehicle letter 2 #1	00	Missing Data/Not applicable	<a href="#">more</a>
V553 — Primary CDC Contacted Vehicle letter 3 #1	00	Missing Data/Not applicable	<a href="#">more</a>
V554 — Primary CDC Contacted Vehicle letter 4 #1	00	Missing Data/Not applicable	<a href="#">more</a>
V555 — Primary CDC Contacted Vehicle Extent #1	00	Missing Data/Not applicable	<a href="#">more</a>
V556 — Primary CDC Contacted Vehicle -CDC #1	9800000	—	—
V558 — Primary CDC Contacted Vehicle letter 1 #2	00	Missing Data/Not applicable	<a href="#">more</a>
V559 — Primary CDC Contacted Vehicle letter 2 #2	00	Missing Data/Not applicable	<a href="#">more</a>
V560 — Primary CDC Contacted Vehicle letter 3 #2	00	Missing Data/Not applicable	<a href="#">more</a>
V561 — Primary CDC Contacted Vehicle letter 4 #2	00	Missing Data/Not applicable	<a href="#">more</a>

V562 — Primary CDC Contacted Vehicle Extent #2	00	Missing Data/Not applicable	<a href="#">more</a>
V563 — Primary CDC Contacted Vehicle -CDC #2	9800000	—	—
V564 — Secondary CDC Case Vehicle - Event No	8	Not applicable	<a href="#">more</a>
V565 — Secondary CDC Case Vehicle - Impact Speed	998	Not Applicable	<a href="#">more</a>
V566 — Secondary CDC Case Vehicle - Estimated By	8	Not applicable (no vehicle/no impact)	<a href="#">more</a>
V567 — Secondary CDC Case Vehicle -crush	998	Not Applicable	<a href="#">more</a>
V568 — Secondary CDC Case Vehicle -clock #1	98	Not Applicable	<a href="#">more</a>
V569 — Secondary CDC Case Vehicle letter 1 #1	00	Missing Data/Not applicable	<a href="#">more</a>
V570 — Secondary CDC Case Vehicle letter 2 #1	00	Missing Data/Not applicable	<a href="#">more</a>
V571 — Secondary CDC Case Vehicle letter 3 #1	00	Missing Data/Not applicable	<a href="#">more</a>
V572 — Secondary CDC Case Vehicle letter 4 #1	00	Missing Data/Not applicable	<a href="#">more</a>
V573 — Secondary CDC Case Vehicle Extent #1	00	Missing Data/Not applicable	<a href="#">more</a>
V574 — Secondary CDC Case Vehicle -CDC #1	9800000	—	—
V576 — Secondary CDC Case Vehicle letter 1 #2	00	Missing Data/Not applicable	<a href="#">more</a>
V577 — Secondary CDC Case Vehicle letter 2 #2	00	Missing Data/Not applicable	<a href="#">more</a>
V578 — Secondary CDC Case Vehicle letter 3 #2	00	Missing Data/Not applicable	<a href="#">more</a>
V579 — Secondary CDC Case Vehicle letter 4 #2	00	Missing Data/Not applicable	<a href="#">more</a>
V580 — Secondary CDC Case Vehicle Extent #2	00	Missing Data/Not applicable	<a href="#">more</a>
V581 — Secondary CDC Case Vehicle -CDC #2	9800000	—	—
V582 — Secondary CDC Contacted Vehicle - Impact Speed	998	Not Applicable	<a href="#">more</a>



V583 — Secondary CDC Contacted Vehicle - Estimated By	8	Not applicable (no vehicle/no impact)	<a href="#">more</a>
V584 — Secondary CDC Contacted Vehicle -crush	998	Not Applicable	<a href="#">more</a>
V585 — Secondary CDC Contacted Vehicle -clock #1	98	Not Applicable	<a href="#">more</a>
V586 — Secondary CDC Contacted Vehicle letter 1 #1	00	Missing Data/Not applicable	<a href="#">more</a>
V587 — Secondary CDC Contacted Vehicle letter 2 #1	00	Missing Data/Not applicable	<a href="#">more</a>
V588 — Secondary CDC Contacted Vehicle letter 3 #1	00	Missing Data/Not applicable	<a href="#">more</a>
V589 — Secondary CDC Contacted Vehicle letter 4 #1	00	Missing Data/Not applicable	<a href="#">more</a>
V590 — Secondary CDC Contacted Vehicle Extent #1	00	Missing Data/Not applicable	<a href="#">more</a>
V591 — Secondary CDC Contacted Vehicle -CDC #1	9800000	—	—
V593 — Secondary CDC Contacted Vehicle letter 1 #2	00	Missing Data/Not applicable	<a href="#">more</a>
V594 — Secondary CDC Contacted Vehicle letter 2 #2	00	Missing Data/Not applicable	<a href="#">more</a>
V595 — Secondary CDC Contacted Vehicle letter 3 #2	00	Missing Data/Not applicable	<a href="#">more</a>
V596 — Secondary CDC Contacted Vehicle letter 4 #2	00	Missing Data/Not applicable	<a href="#">more</a>
V597 — Secondary CDC Contacted Vehicle Extent #2	00	Missing Data/Not applicable	<a href="#">more</a>
V598 — Secondary CDC Contacted Vehicle -CDC #2	9800000	—	—

## Crash Severity

Variable Number and Name	Code Value	Code Description	Other Options
V601 — Case Vehicle Primary Impact Number	1	—	—
V602 — Primary Impact Total Delta-V	062 kph	—	—
V603 — Primary Case Vehicle Reconstructed Longitudinal Delta-V	-062 kph	—	—
V604 — Primary Case Vehicle Reconstructed Lateral Delta-V	0000 kph	—	—
V605 — Primary Case Vehicle Reconstructed Crush Energy	0268 kJ	—	—
V606 — Primary Impact Case Vehicle -reconstruction	22	Reconstructed, moderate confidence level	<a href="#">more</a>
V607 — Primary Case Vehicle Reconstruction Mode	2	CDC & detailed damage	<a href="#">more</a>
V608 — Primary Contacted Vehicle Reconstructed Total Delta-V	888	N/A	<a href="#">more</a>
V609 — Primary Contacted Vehicle Reconstructed Longitudinal Delta-V	8888	—	—
V610 — Primary Contacted Vehicle Reconstructed Lateral Delta-V	8888	—	—
V611 — Primary Contacted Vehicle Reconstructed Crush Energy	8888	—	—
V612 — Case Vehicle Secondary Impact Number	8	—	—
V613 — Secondary Case Vehicle Reconstructed Total Delta-V	888	N/A	<a href="#">more</a>
V614 — Secondary Case Vehicle Reconstructed Longitudinal Delta-V	8888	—	—
V615 — Secondary Case Vehicle Reconstructed Lateral Delta-V	8888	—	—
V616 — Secondary Case Vehicle Reconstructed Crush Energy	8888	—	—
V617 — Secondary Case Vehicle Reconstruction Note	88	—	—

V618 — Secondary Case Vehicle Reconstruction Mode	8	Not applicable	<a href="#">more</a>
V619 — Secondary Contacted Vehicle Reconstructed Total Delta-V	888	N/A	<a href="#">more</a>
V620 — Secondary Contacted Vehicle Reconstructed Longitudinal Delta-V	8888	—	—
V621 — Secondary Contacted Vehicle Reconstructed Lateral Delta-V	8888	—	—
V622 — Secondary Contacted Vehicle Reconstructed Crush Energy	8888	—	—
V623 — Case Vehicle Primary Impact Number	1	—	—
V624 — Primary Case Vehicle Reconstructed Total EBS	062 kph	—	—
V625 — Primary Case Vehicle Reconstructed Longitudinal EBS	-062 kph	—	—
V626 — Primary Case Vehicle Reconstructed Lateral EBS	0000 kph	—	—
V627 — Primary Case Vehicle Reconstructed Crush Energy	0268 kJ	—	—
V628 — Primary Case Vehicle Reconstruction Note	22	Reconstructed, moderate confidence level	<a href="#">more</a>
V629 — Primary Case Vehicle Reconstruction Mode	2	CDC & detailed damage	<a href="#">more</a>
V630 — Primary Contacted Vehicle Reconstruction Total EBS	888	N/A	<a href="#">more</a>
V631 — Primary Contacted Vehicle Reconstruction Longitudinal EBS	8888	—	—
V632 — Primary Contacted Vehicle Reconstruction Lateral EBS	8888	—	—
V633 — Primary Contacted Vehicle Reconstruction Crush Energy	8888	—	—
V634 — Case Vehicle Secondary Impact Number	8	Not applicable	<a href="#">more</a>
V635 — Secondary Case Vehicle Reconstruction Total EBS	888	N/A	<a href="#">more</a>
V636 — Secondary Case Vehicle Reconstruction Longitudinal EBS	8888	—	—
V637 — Secondary Case Vehicle Reconstruction Lateral EBS	8888	—	—

V638 — Secondary Case Vehicle Reconstruction Crush Energy	8888	—	—
V639 — Secondary Case Vehicle Reconstruction Note	88	—	—
V640 — Secondary Case Vehicle Reconstruction Mode	8	Not applicable	<a href="#">more</a>
V641 — Secondary Contacted Vehicle Reconstruction Total EBS	888	N/A	<a href="#">more</a>
V642 — Secondary Contacted Vehicle Reconstruction Longitudinal EBS	8888	—	—
V643 — Secondary Contacted Vehicle Reconstruction Lateral EBS	8888	—	—
V644 — Secondary Contacted Vehicle Reconstruction Crush Energy	8888	—	—
V645 — Case Vehicle Reconstructed Impact Number	1	—	—
V646 — Case Vehicle Impact 1 Plane	1	Bumper	<a href="#">more</a>
V647 — Case Vehicle Impact 1 Direct Damage Length [DDL]	034 cm	—	—
V648 — Case Vehicle Impact 1 Max Crush	110 cm	—	—
V649 — Case Vehicle Impact 1 Field-L	083 cm	—	—
V650 — Case Vehicle Impact 1 C1	110 cm	—	—
V651 — Case Vehicle Impact 1 C2	109 cm	—	—
V652 — Case Vehicle Impact 1 C3	067 cm	—	—
V653 — Case Vehicle Impact 1 C4	033 cm	—	—
V654 — Case Vehicle Impact 1 C5	019 cm	—	—
V655 — Case Vehicle Impact 1 C6	006 cm	—	—
V656 — Case Vehicle Impact 1 +/- D	-060 cm	—	—
V657 — Case Vehicle Reconstructed Impact Number	9	Unknown	<a href="#">more</a>
V658 — Case Vehicle Impact 2 Plane	9	Unknown	<a href="#">more</a>
V659 — Case Vehicle Impact 2 Direct Damage Length [DDL]	999	Unknown	<a href="#">more</a>
V660 — Case Vehicle Impact 2 Max	999	Unknown	<a href="#">more</a>

Crush			
V661 — Case Vehicle Impact 2 Field-L	999	Unknown	<a href="#">more</a>
V662 — Case Vehicle Impact 2 C1	999	Unknown	<a href="#">more</a>
V663 — Case Vehicle Impact 2 C2	999	Unknown	<a href="#">more</a>
V664 — Case Vehicle Impact 2 C3	999	Unknown	<a href="#">more</a>
V665 — Case Vehicle Impact 2 C4	999	Unknown	<a href="#">more</a>
V666 — Case Vehicle Impact 2 C5	999	Unknown	<a href="#">more</a>
V667 — Case Vehicle Impact 2 C6	999	Unknown	<a href="#">more</a>
V668 — Case Vehicle Impact 2 +/- D	9999	—	—
V669 — Other Vehicle Reconstructed Impact Number	9	Unknown	<a href="#">more</a>
V670 — Other Vehicle Impact 1 Plane	9	Unknown	<a href="#">more</a>
V671 — Other Vehicle Impact 1 Direct Damage Length [DDL]	999	Unknown	<a href="#">more</a>
V672 — Other Vehicle Impact 1 Max Crush	999	Unknown	<a href="#">more</a>
V673 — Other Vehicle Impact 1 Field-L	999	Unknown	<a href="#">more</a>
V674 — Other Vehicle Impact 1 C1	999	Unknown	<a href="#">more</a>
V675 — Other Vehicle Impact 1 C2	999	Unknown	<a href="#">more</a>
V676 — Other Vehicle Impact 1 C3	999	Unknown	<a href="#">more</a>
V677 — Other Vehicle Impact 1 C4	999	Unknown	<a href="#">more</a>
V678 — Other Vehicle Impact 1 C5	999	Unknown	<a href="#">more</a>
V679 — Other Vehicle Impact 1 C6	999	Unknown	<a href="#">more</a>
V680 — Other Vehicle Impact 1 +/- D	9999	—	—
V681 — Other Vehicle Reconstructed Impact Number	9	Unknown	<a href="#">more</a>
V682 — Other Vehicle Impact 2 Plane	9	Unknown	<a href="#">more</a>
V683 — Other Vehicle Impact 2 Direct Damage Length [DDL]	999	Unknown	<a href="#">more</a>
V684 — Other Vehicle Impact 2 Max Crush	999	Unknown	<a href="#">more</a>

V685 — Other Vehicle Impact 2 Field-L	999	Unknown	<a href="#">more</a>
V686 — Other Vehicle Impact 2 C1	999	Unknown	<a href="#">more</a>
V687 — Other Vehicle Impact 2 C2	999	Unknown	<a href="#">more</a>
V688 — Other Vehicle Impact 2 C3	999	Unknown	<a href="#">more</a>
V689 — Other Vehicle Impact 2 C4	999	Unknown	<a href="#">more</a>
V690 — Other Vehicle Impact 2 C5	999	Unknown	<a href="#">more</a>
V691 — Other Vehicle Impact 2 C6	999	Unknown	<a href="#">more</a>
V692 — Other Vehicle Impact 2 +/- D	9999	—	—

## Case Vehicle

### Tires & Rims

Variable Number and Name	Code Value	Code Description	Other Options
V701 — Left Front Wheel Damaged	1	Yes	<a href="#">more</a>
V702 — Right Front Wheel Damaged	0	No	<a href="#">more</a>
V703 — Right Rear Wheel Damaged	0	No	<a href="#">more</a>
V704 — Left Rear Wheel Damaged	0	No	<a href="#">more</a>
V705 — Left Front Tire Tread Type	4	All Weather	<a href="#">more</a>
V706 — Right Front Tire Tread Type	4	All Weather	<a href="#">more</a>
V707 — Right Rear Tire Tread Type	4	All Weather	<a href="#">more</a>
V708 — Left Rear Tire Tread Type	4	All Weather	<a href="#">more</a>
V709 — Left Front Carcass Construction	3	Radial	<a href="#">more</a>
V710 — Right Front Carcass Construction	3	Radial	<a href="#">more</a>
V711 — Right Rear Carcass Construction	3	Radial	<a href="#">more</a>
V712 — Left Rear Carcass Construction	3	Radial	<a href="#">more</a>
V717 — Left Front Tire Size	P22575R15	—	—
V718 — Right Front Tire Size	P22575R15	—	—
V719 — Right Rear Tire Size	P22575R15	—	—
V720 — Left Rear Tire Size	P22575R15	—	—

## Case Vehicle

### Fuel, Tank, Fire

Variable Number and Name	Code Value	Code Description	Other Options
V801 — Propulsive Fuel Type	1	Gasoline	<a href="#">more</a>
V802 — Main Tank Location	322	Within frame/centered laterally - within vertically	<a href="#">more</a>
V803 — Main Filler Cap Location	113	Left of frame laterally - above vertically	<a href="#">more</a>
V804 — Main Tank Material	9	Unknown	<a href="#">more</a>
V805 — Aux Tank Type	8	Not applicable (not equipped)	<a href="#">more</a>
V806 — Aux Tank Location	888	Not applicable (not equipped)	<a href="#">more</a>
V807 — Aux Filler Cap Location	888	Not applicable (not equipped)	<a href="#">more</a>
V808 — Aux Tank Material	8	Not applicable	<a href="#">more</a>
V901 — Fuel Leakage From Crash	0	No	<a href="#">more</a>
V1001 — Fire In Or On Case Vehicle	0	No	<a href="#">more</a>



## Case Vehicle

### Exterior

Variable Number and Name	Code Value	Code Description	Other Options
V1101 — Hood Latch Released	0	No	<a href="#">more</a>
V1102 — Hood Latch Damaged	1	Yes	<a href="#">more</a>
V1103 — Hood Latch Jammed	1	Yes	<a href="#">more</a>
V1104 — Left Hood Hinge Damaged	1	Yes	<a href="#">more</a>
V1105 — Left Hood Hinge Separated	0	No	<a href="#">more</a>
V1106 — Right Hood Hinge Damaged	1	Yes	<a href="#">more</a>
V1107 — Right Hood Hinge Separated	0	No	<a href="#">more</a>
V1108 — Hood Remained On Vehicle	1	Yes	<a href="#">more</a>
V1109 — Rear Hood Edge Elevated	1	Yes	<a href="#">more</a>
V1110 — Edge Contacted Windshield	1	Yes	<a href="#">more</a>
V1111 — Edge Penetrated Windshield	1	Yes	<a href="#">more</a>
V1112 — Hood Latch Location	1	Front of Vehicle	<a href="#">more</a>
V1113 — Eng/Transmissn Mount Separation	0	No	<a href="#">more</a>
V1114 — Steerng Column Flex Coupling	9	Unknown if equipped	<a href="#">more</a>
V1115 — Steerng Column Coupling Damaged	9	Unknown	<a href="#">more</a>
V1116 — Steerng Column Coupling Separated	9	Unknown	<a href="#">more</a>
V1117 — Eng Comp Telescopng Unit	88	Not collected	<a href="#">more</a>
V1118 — Comp Orig/Telescopd Diff	888	Not collected	<a href="#">more</a>

V1119 — Left Side Body Mount Separation	0	No	<a href="#">more</a>
V1120 — Upper Left A-pillar Separation	4	No separation, but damaged	<a href="#">more</a>
V1121 — Lower Left A-pillar Separation	4	No separation, but damaged	<a href="#">more</a>
V1122 — Upper Left B-pillar Separation	4	No separation, but damaged	<a href="#">more</a>
V1123 — Lower Left B-pillar Separation	4	No separation, but damaged	<a href="#">more</a>
V1124 — Upper Left C-pillar Separation	4	No separation, but damaged	<a href="#">more</a>
V1125 — Lower Left C-pillar Separation	4	No separation, but damaged	<a href="#">more</a>
V1126 — Upper Left D-pillar Separation	0	No	<a href="#">more</a>
V1127 — Lower Left D-pillar Separation	0	No	<a href="#">more</a>
V1128 — Left Front Door Opening Cause	4	Striker-pillar separation	<a href="#">more</a>
V1129 — Left Rear Door Opening Cause	0	Door did not open	<a href="#">more</a>
V1130 — Left Front Door Jammed Closed	0	No	<a href="#">more</a>
V1131 — Left Rear Door Jammed Closed	1	Yes	<a href="#">more</a>
V1132 — Rear Door Type	2	One-way tailgate	<a href="#">more</a>
V1133 — Rear Door Opening Cause	0	Door did not open	<a href="#">more</a>
V1134 — Rear Door Jammed Closed	0	No	<a href="#">more</a>
V1135 — Luggage Partition Damagd	8	Not applicable	<a href="#">more</a>
V1136 — Spare Tire Status	8	Not collected	<a href="#">more</a>
V1137 — Trailer Hitch Type	0	No hitch	<a href="#">more</a>
V1138 — Trailer Type	0	No trailer	<a href="#">more</a>
V1139 — Right Side Body Mount Separation	0	No	<a href="#">more</a>

V1140 — Upper Right A-pillar Separation	0	No	<a href="#">more</a>
V1141 — Lower Right A-pillar Separation	0	No	<a href="#">more</a>
V1142 — Upper Right B-pillar Separation	0	No	<a href="#">more</a>
V1143 — Lower Right B-pillar Separation	0	No	<a href="#">more</a>
V1144 — Upper Right C-pillar Separation	0	No	<a href="#">more</a>
V1145 — Lower Right C-pillar Separation	0	No	<a href="#">more</a>
V1146 — Upper Right D-pillar Separation	0	No	<a href="#">more</a>
V1147 — Lower Right D-pillar Separation	0	No	<a href="#">more</a>
V1148 — Right Front Door Opening Cause	00	Door did not open	<a href="#">more</a>
V1149 — Right Rear Door Opening Cause	00	Door did not open	<a href="#">more</a>
V1150 — Right Front Door Jammed Closed	0	No	<a href="#">more</a>
V1151 — Right Rear Door Jammed Closed	0	No	<a href="#">more</a>
V1152 — Van Rear Door Type	8	Not applicable (not a van)	<a href="#">more</a>
V1153 — Windshield Cracked		Yes	<a href="#">more</a>
V1154 — Windshield Broken	1	Yes	<a href="#">more</a>
V1155 — Windshield Cracked or Broken by Occupant	0	No	<a href="#">more</a>
V1156 — Bond Separation Extent	2	21 - 40%	<a href="#">more</a>
V1157 — Windshield Code		—	—
V1158 — Did Sun/T Roof Open	8	Not Applicable	<a href="#">more</a>

## Case Vehicle

### Steering

#### Column/Rim

Variable Number and Name	Code Value	Code Description	Other Options
V1201 — Steering Wheel Rim Damage	1	Deformed slightly	<a href="#">more</a>
V1202 — Number of Steering Wheel Spokes	4	4 spokes	<a href="#">more</a>
V1203 — Steering Wheel Spoke Damage	0	None	<a href="#">more</a>
V1204 — Column Tilt Feature	1	Yes, equipped (position unknown)	<a href="#">more</a>
V1205 — Column Swing-away Feature	0	Not equipped	<a href="#">more</a>
V1206 — Column Telescoping Feature	0	Not equipped	<a href="#">more</a>
V1207 — Wheel Energy Absorb Device	8	Not collected	<a href="#">more</a>
V1208 — Wheel Ea Orig/Damaged Diff	888	Not collected	<a href="#">more</a>
V1209 — Column Energy Absorb Device	88	Not collected	<a href="#">more</a>
V1210 — Column Ea Orig/Comprss Diff	888	Not collected	<a href="#">more</a>
V1211 — Shear Capsule Separation	888	Not collected	<a href="#">more</a>
V1212 — Column Vertical Rotation	2	Downward apparent rotation	<a href="#">more</a>
V1213 — Column Lateral Rotation	1	Left apparent rotation	<a href="#">more</a>
V1214 — Steering Wheel Hub Damage	0	None	<a href="#">more</a>

## Case Vehicle

### Intrusion

Variable Number and Name	Code Value	Code Description	Other Options
V1301 — Occupant Compartment Intrusion	1	Yes	<a href="#">more</a>
V1302 — Was Intrusion Catastrophic	0	No	<a href="#">more</a>
V1303 — Intrusion Number 01	01	Intrusion #1	<a href="#">more</a>
V1304 — Intrusion 01 Occupant Space Number	11	First row, Left seat	<a href="#">more</a>
V1305 — Intrusion 01 Intruding Object	03	Toe pan	<a href="#">more</a>
V1306 — Intrusion 01 Assoc Event Number	1	Event #1	<a href="#">more</a>
V1307 — Intrusion 01 Max Intrusion X-axis	62 cm	—	—
V1308 — Intrusion 01 Max Intrusion Y-axis	00 cm	0 cm or No Intrusion	<a href="#">more</a>
V1309 — Intrusion 01 Max Intrusion Z-axis	00 cm	0 cm or No Intrusion	<a href="#">more</a>
V1310 — Intrusion 01 Occupant Number	04	—	—
V1311 — Intrusion 01 Injury Number	24	—	—
V1312 — Intrusion 01 Occupant Number	01	Occupant number 1, contact	<a href="#">more</a>
V1313 — Intrusion 01 Injury Number	25	—	—
V1314 — Intrusion Number 02	02	Intrusion #2	<a href="#">more</a>
V1315 — Intrusion 02 Occupant Space Number	11	First row, Left seat	<a href="#">more</a>
V1316 — Intrusion 02 Intruding Object	44	Object external to passenger compartment but part of case vehicle	<a href="#">more</a>
V1317 — Intrusion 02 Assoc Event Number	1	Event #1	<a href="#">more</a>

V1318 — Intrusion 02 Max Intrusion X-axis	36 cm	—	—
V1319 — Intrusion 02 Max Intrusion Y-axis	00 cm	0 cm or No Intrusion	<a href="#">more</a>
V1320 — Intrusion 02 Max Intrusion Z-axis	00 cm	0 cm or No Intrusion	<a href="#">more</a>
V1321 — Intrusion 02 Occupant Number	01	Occupant number 1, contact	<a href="#">more</a>
V1322 — Intrusion 02 Injury Number	25	—	—
V1323 — Intrusion 02 Occupant Number	01	Occupant number 1, contact	<a href="#">more</a>
V1324 — Intrusion 02 Injury Number	26	—	—
V1325 — Intrusion Number 03	03	Intrusion #3	<a href="#">more</a>
V1326 — Intrusion 03 Occupant Space Number	11	First row, Left seat	<a href="#">more</a>
V1327 — Intrusion 03 Intruding Object	01	Instrument panel	<a href="#">more</a>
V1328 — Intrusion 03 Assoc Event Number	1	Event #1	<a href="#">more</a>
V1329 — Intrusion 03 Max Intrusion X-axis	24 cm	—	—
V1330 — Intrusion 03 Max Intrusion Y-axis	00 cm	0 cm or No Intrusion	<a href="#">more</a>
V1331 — Intrusion 03 Max Intrusion Z-axis	00 cm	0 cm or No Intrusion	<a href="#">more</a>
V1332 — Intrusion 03 Occupant Number	01	Occupant number 1, contact	<a href="#">more</a>
V1333 — Intrusion 03 Injury Number	13	—	—
V1334 — Intrusion 03 Occupant Number	01	Occupant number 1, contact	<a href="#">more</a>
V1335 — Intrusion 03 Injury Number	14	—	—
V1336 — Intrusion Number 04	04	Intrusion #4	<a href="#">more</a>
V1337 — Intrusion 04 Occupant Space Number	11	First row, Left seat	<a href="#">more</a>
V1338 — Intrusion 04 Intruding	04	Floor pan	<a href="#">more</a>

Object			
V1339 — Intrusion 04 Assoc Event Number	1	Event #1	<a href="#">more</a>
V1340 — Intrusion 04 Max Intrusion X-axis	00 cm	0 cm or No Intrusion	<a href="#">more</a>
V1341 — Intrusion 04 Max Intrusion Y-axis	00 cm	0 cm or No Intrusion	<a href="#">more</a>
V1342 — Intrusion 04 Max Intrusion Z-axis	20 cm	—	—
V1343 — Intrusion 04 Occupant Number	01	Occupant number 1, contact	<a href="#">more</a>
V1344 — Intrusion 04 Injury Number	29	—	—
V1345 — Intrusion 04 Occupant Number	01	Occupant number 1, contact	<a href="#">more</a>
V1346 — Intrusion 04 Injury Number	25	—	—
V1347 — Intrusion Number 05	05	Intrusion #5	<a href="#">more</a>
V1348 — Intrusion 05 Occupant Space Number	11	First row, Left seat	<a href="#">more</a>
V1349 — Intrusion 05 Intruding Object	08	A-pillar	<a href="#">more</a>
V1350 — Intrusion 05 Assoc Event Number	1	Event #1	<a href="#">more</a>
V1351 — Intrusion 05 Max Intrusion X-axis	13 cm	—	—
V1352 — Intrusion 05 Max Intrusion Y-axis	00 cm	0 cm or No Intrusion	<a href="#">more</a>
V1353 — Intrusion 05 Max Intrusion Z-axis	00 cm	0 cm or No Intrusion	<a href="#">more</a>
V1354 — Intrusion 05 Occupant Number	00	No contact or no intrusion	<a href="#">more</a>
V1355 — Intrusion 05 Injury Number	00	No injury or no intrusion	<a href="#">more</a>
V1356 — Intrusion 05 Occupant Number	00	No contact or no intrusion	<a href="#">more</a>
V1357 — Intrusion 05 Injury Number	00	No injury or no intrusion	<a href="#">more</a>
V1358 — Intrusion Number 06	06	Intrusion #6	<a href="#">more</a>

V1359 — Intrusion 06 Occupant Space Number	12	First row, Center seat	<a href="#">more</a>
V1360 — Intrusion 06 Intruding Object	01	Instrument panel	<a href="#">more</a>
V1361 — Intrusion 06 Assoc Event Number	1	Event #1	<a href="#">more</a>
V1362 — Intrusion 06 Max Intrusion X-axis	18 cm	—	—
V1363 — Intrusion 06 Max Intrusion Y-axis	00 cm	0 cm or No Intrusion	<a href="#">more</a>
V1364 — Intrusion 06 Max Intrusion Z-axis	00 cm	0 cm or No Intrusion	<a href="#">more</a>
V1365 — Intrusion 06 Occupant Number	01	Occupant number 1, contact	<a href="#">more</a>
V1366 — Intrusion 06 Injury Number	08	—	—
V1367 — Intrusion 06 Occupant Number	00	No contact or no intrusion	<a href="#">more</a>
V1368 — Intrusion 06 Injury Number	00	No injury or no intrusion	<a href="#">more</a>
V1369 — Intrusion Number 07	00	No Intrusion, None	<a href="#">more</a>
V1370 — Intrusion 07 Occupant Space Number	00	No Intrusion, None	<a href="#">more</a>
V1371 — Intrusion 07 Intruding Object	00	No Intrusion, None	<a href="#">more</a>
V1372 — Intrusion 07 Assoc Event Number	0	No Intrusion, None	<a href="#">more</a>
V1373 — Intrusion 07 Max Intrusion X-axis	00 cm	0 cm or No Intrusion	<a href="#">more</a>
V1374 — Intrusion 07 Max Intrusion Y-axis	00 cm	0 cm or No Intrusion	<a href="#">more</a>
V1375 — Intrusion 07 Max Intrusion Z-axis	00 cm	0 cm or No Intrusion	<a href="#">more</a>
V1376 — Intrusion 07 Occupant Number	00	No contact or no intrusion	<a href="#">more</a>
V1377 — Intrusion 07 Injury Number	00	No injury or no intrusion	<a href="#">more</a>
V1378 — Intrusion 07 Occupant Number	00	No contact or no intrusion	<a href="#">more</a>



V1379 — Intrusion 07 Injury Number	99	Contact, injury unknown or data not collected	<a href="#">more</a>
V1380 — Intrusion Number 08	00	No Intrusion, None	<a href="#">more</a>
V1381 — Intrusion 08 Occupant Space Number	00	No Intrusion, None	<a href="#">more</a>
V1382 — Intrusion 08 Intruding Object	00	No Intrusion, None	<a href="#">more</a>
V1383 — Intrusion 08 Assoc Event Number	0	No Intrusion, None	<a href="#">more</a>
V1384 — Intrusion 08 Max Intrusion X-axis	00 cm	0 cm or No Intrusion	<a href="#">more</a>
V1385 — Intrusion 08 Max Intrusion Y-axis	00 cm	0 cm or No Intrusion	<a href="#">more</a>
V1386 — Intrusion 08 Max Intrusion Z-axis	00 cm	0 cm or No Intrusion	<a href="#">more</a>
V1387 — Intrusion 08 Occupant Number	00	No contact or no intrusion	<a href="#">more</a>
V1388 — Intrusion 08 Injury Number	00	No injury or no intrusion	<a href="#">more</a>
V1389 — Intrusion 08 Occupant Number	00	No contact or no intrusion	<a href="#">more</a>
V1390 — Intrusion 08 Injury Number	99	Contact, injury unknown or data not collected	<a href="#">more</a>
V1391 — Intrusion Number 09	00	No Intrusion, None	<a href="#">more</a>
V1392 — Intrusion 09 Occupant Space Number	00	No Intrusion, None	<a href="#">more</a>
V1393 — Intrusion 09 Intruding Object	00	No Intrusion, None	<a href="#">more</a>
V1394 — Intrusion 09 Assoc Event Number	0	No Intrusion, None	<a href="#">more</a>
V1395 — Intrusion 09 Max Intrusion X-axis	00 cm	0 cm or No Intrusion	<a href="#">more</a>
V1396 — Intrusion 09 Max Intrusion Y-axis	00 cm	0 cm or No Intrusion	<a href="#">more</a>
V1397 — Intrusion 09 Max Intrusion Z-axis	00 cm	0 cm or No Intrusion	<a href="#">more</a>
V1398 — Intrusion 09 Occupant Number	00	No contact or no intrusion	<a href="#">more</a>
V1399 — Intrusion 09 Injury	00	No injury or no intrusion	<a href="#">more</a>

Number			
V1400 — Intrusion 09 Occupant Number	00	No contact or no intrusion	<a href="#">more</a>
V1401 — Intrusion 09 Injury Number	99	Contact, injury unknown or data not collected	<a href="#">more</a>
V1402 — Intrusion Number 10	00	No Intrusion, None	<a href="#">more</a>
V1403 — Intrusion 10 Occupant Space Number	00	No Intrusion, None	<a href="#">more</a>
V1404 — Intrusion 10 Intruding Object	00	No Intrusion, None	<a href="#">more</a>
V1405 — Intrusion 10 Assoc Event Number	0	No Intrusion, None	<a href="#">more</a>
V1406 — Intrusion 10 Max Intrusion X-axis	00 cm	0 cm or No Intrusion	<a href="#">more</a>
V1407 — Intrusion 10 Max Intrusion Y-axis	00 cm	0 cm or No Intrusion	<a href="#">more</a>
V1408 — Intrusion 10 Max Intrusion Z-axis	00 cm	0 cm or No Intrusion	<a href="#">more</a>
V1409 — Intrusion 10 Occupant Number	00	No contact or no intrusion	<a href="#">more</a>
V1410 — Intrusion 10 Injury Number	00	No injury or no intrusion	<a href="#">more</a>
V1411 — Intrusion 10 Occupant Number	00	No contact or no intrusion	<a href="#">more</a>
V1412 — Intrusion 10 Injury Number	99	Contact, injury unknown or data not collected	<a href="#">more</a>
V1413 — Door Intrusion Number 01	88	Not Applicable	<a href="#">more</a>
V1414 — Door Intrusion Number 01 Cause	8	Not applicable	<a href="#">more</a>
V1415 — Door Intrusion Number 02	88	Not Applicable	<a href="#">more</a>
V1416 — Door Intrusion Number 02 Cause	8	Not applicable	<a href="#">more</a>
V1417 — Door Intrusion Number 03	88	Not Applicable	<a href="#">more</a>
V1418 — Door Intrusion Number 03 Cause	8	Not applicable	<a href="#">more</a>
V1419 — Door Intrusion 01	88	Not Applicable	<a href="#">more</a>

Component			
V1420 — Door Intrusion 01 Component Damaged 1	8	Not Applicable	<a href="#">more</a>
V1421 — Door Intrusion 01 Component Damaged 2	8	Not Applicable	<a href="#">more</a>
V1422 — Door Intrusion 02 Component	88	Not Applicable	<a href="#">more</a>
V1423 — Door Intrusion 02 Component Damaged 1	8	Not Applicable	<a href="#">more</a>
V1424 — Door Intrusion 02 Component Damaged 2	8	Not Applicable	<a href="#">more</a>
V1425 — Door Intrusion 03 Component	88	Not Applicable	<a href="#">more</a>
V1426 — Door Intrusion 03 Component Damaged 1	8	Not Applicable	<a href="#">more</a>
V1427 — Door Intrusion 03 Component Damaged 2	8	Not Applicable	<a href="#">more</a>
V1428 — Door Intrusion 04 Component	88	Not Applicable	<a href="#">more</a>
V1429 — Door Intrusion 04 Component Damaged 1	8	Not Applicable	<a href="#">more</a>
V1430 — Door Intrusion 04 Component Damaged 2	8	Not Applicable	<a href="#">more</a>

## Case Vehicle

### Airbag(s)

Variable Number and Name	Code Value	Code Description	Other Options
V1501 — Driver Airbag Equipped	1	Yes	<a href="#">more</a>
V1502 — Driver Airbag Deployed	1	Yes	<a href="#">more</a>
V1503 — Driver Airbag Condition	0	No Damage	<a href="#">more</a>
V1504 — Passenger Airbag Equip	1	Yes	<a href="#">more</a>
V1505 — Passenger Airbag Deployed	1	Yes	<a href="#">more</a>
V1506 — Passenger Airbag Condition	0	No Damage	<a href="#">more</a>
V1507 — Steering Wheel Airbag Tether	1	Yes	<a href="#">more</a>
V1508 — Driver Airbag Marked By Contact	0	No	<a href="#">more</a>
V1509 — Passenger Airbag Tether	0	No	<a href="#">more</a>
V1510 — Passenger Airbag Marked By Contact	0	No	<a href="#">more</a>

## Case Vehicle

### Interior

Variable Number and Name	Code Value	Code Description	Other Options
V1601 — Left Front Door Damaged	1	Yes	<a href="#">more</a>
V1602 — Right Front Door Damaged	0	No	<a href="#">more</a>
V1603 — Left Front Hardware Damaged	1	Yes	<a href="#">more</a>
V1604 — Right Front Hardware Damaged	0	No	<a href="#">more</a>
V1605 — Left Front Armrest Damaged	1	Yes	<a href="#">more</a>
V1606 — Right Front Armrest Damaged	0	No	<a href="#">more</a>
V1607 — Left Front Glass Damaged	1	Yes	<a href="#">more</a>
V1608 — Right Front Glass Damaged	0	No	<a href="#">more</a>
V1609 — Left Rear Door Area Damaged	0	No	<a href="#">more</a>
V1610 — Right Rear Door Area Damaged	0	No	<a href="#">more</a>
V1611 — Left Rear Hardware Damaged	0	No	<a href="#">more</a>
V1612 — Right Rear Hardware Damaged	0	No	<a href="#">more</a>
V1613 — Left Rear Armrest Damaged	0	No	<a href="#">more</a>
V1614 — Right Rear Armrest Damaged	0	No	<a href="#">more</a>
V1615 — Left Rear Glass Damaged	0	No	<a href="#">more</a>
V1616 — Right Rear Glass Damaged	0	No	<a href="#">more</a>
V1617 — Left Roof Side Rail Damaged	1	Yes	<a href="#">more</a>

V1618 — Right Roof Side Rail Damaged	0	No	<a href="#">more</a>
V1619 — Left B-pillar Damaged	0	No	<a href="#">more</a>
V1620 — Right B-pillar Damaged	0	No	<a href="#">more</a>
V1621 — Left C-pillar Damaged	0	No	<a href="#">more</a>
V1622 — Right C-pillar Damaged	0	No	<a href="#">more</a>
V1623 — Left D-pillar Damaged	0	No	<a href="#">more</a>
V1624 — Right D-pillar Damaged	0	No	<a href="#">more</a>
V1625 — Left Headlining Damaged	1	Yes	<a href="#">more</a>
V1626 — Right Headlining Damaged	0	No	<a href="#">more</a>
V1627 — Left Roof Structure Damaged	1	Yes	<a href="#">more</a>
V1628 — Right Roof Structure Damaged	0	No	<a href="#">more</a>
V1629 — Left T/Sun Roof Damaged	8	Not applicable	<a href="#">more</a>
V1630 — Right T/Sun Roof Damaged	8	Not applicable	<a href="#">more</a>
V1631 — Other Left Side Item Damaged	8	Not applicable	<a href="#">more</a>
V1632 — Other Right Side Item Damaged	8	Not applicable	<a href="#">more</a>
V1633 — Foot Controls Damaged	4	Yes, occupant contact	<a href="#">more</a>
V1634 — Ignition Key Damaged	0	No	<a href="#">more</a>
V1635 — Rear View Mirror Damaged	0	No	<a href="#">more</a>
V1636 — Sunvisor/Fitting Damaged	5	Left side only	<a href="#">more</a>
V1637 — Windshield Molding Damaged	0	No	<a href="#">more</a>
V1638 — Left A-pillar Damaged	1	Yes	<a href="#">more</a>
V1639 — Right A-pillar Damaged	0	No	<a href="#">more</a>
V1640 — Center Console Damaged	1	Yes	<a href="#">more</a>

V1641 — Transmission Lever Damaged	1	Yes	<a href="#">more</a>
V1642 — Horn/Spoke Shroud Damaged	0	No	<a href="#">more</a>
V1643 — Upper Panel Damaged	1	Yes	<a href="#">more</a>
V1644 — Mid Panel Damaged	4	Yes, occupant contact	<a href="#">more</a>
V1645 — Lower Panel Damaged	4	Yes, occupant contact	<a href="#">more</a>
V1646 — Ashtray Damaged	1	Yes	<a href="#">more</a>
V1647 — Control Knob/Lever Damaged	1	Yes	<a href="#">more</a>
V1648 — Glove Compartment Area Damaged	0	No	<a href="#">more</a>
V1649 — Instruments Damaged	0	No	<a href="#">more</a>
V1650 — Park Brake Release Damaged	0	No	<a href="#">more</a>
V1651 — Park Brake Pedal Damaged	1	Yes	<a href="#">more</a>
V1652 — A/C Or Upper Vent Damaged	1	Yes	<a href="#">more</a>
V1653 — Heater Or A/C Duct Damaged	0	No	<a href="#">more</a>
V1654 — Radio Damaged	1	Yes	<a href="#">more</a>
V1655 — Other Item Damaged	8	Not applicable	<a href="#">more</a>
V1656 — Rear Window Damaged	0	No	<a href="#">more</a>
V1657 — Rear Window Header Damaged	0	No	<a href="#">more</a>
V1658 — Vertical Console Damaged	1	Yes	<a href="#">more</a>
V1659 — Roof Console Damaged	8	Not applicable	<a href="#">more</a>

## Case Vehicle

### Seats

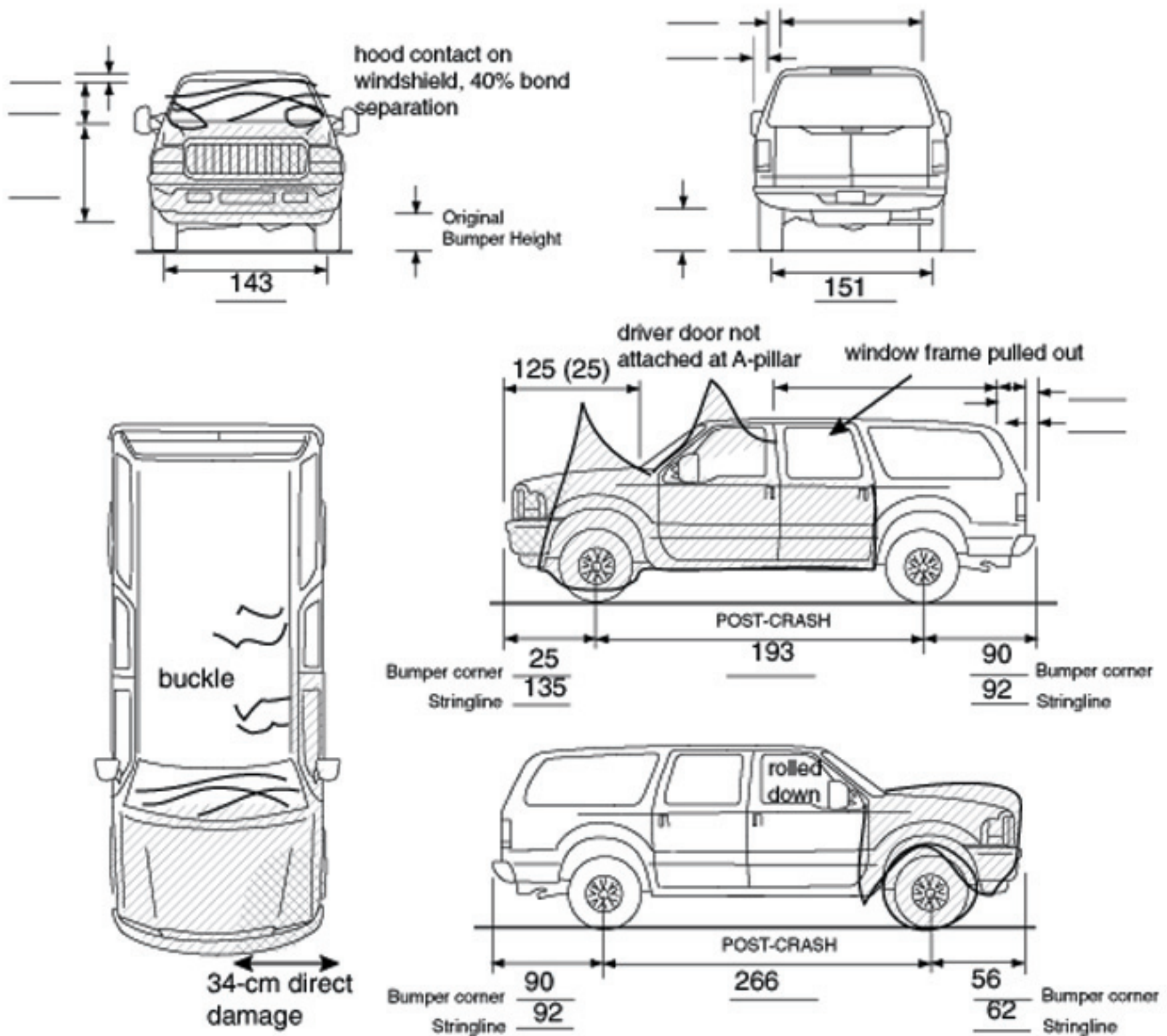
Variable Number and Name	Code Value	Code Description	Other Options
V1701 — Driver Front Seat Type	05	Bucket	<a href="#">more</a>
V1702 — Passenger Front Seat Type	05	Bucket	<a href="#">more</a>
V1703 — Driver Seat Mount Type	1	Standard	<a href="#">more</a>
V1704 — Passenger Seat Mount Type	1	Standard	<a href="#">more</a>
V1705 — Driver Swivel Mechanism Equipped	0	No	<a href="#">more</a>
V1706 — Passenger Swivel Mechanism Equipped	0	No	<a href="#">more</a>
V1707 — Driver Seat Original Equipment	1	Yes	<a href="#">more</a>
V1708 — Passenger Seat Original Equipment	1	Yes	<a href="#">more</a>
V1709 — Driver Seat/Rear Occupant Contact	8	Not applicable	<a href="#">more</a>
V1710 — Passenger Seat/Rear Occupant Contact	8	Not applicable	<a href="#">more</a>
V1711 — Driver Seat Damage	2	Cushion only damaged	<a href="#">more</a>
V1712 — Passenger Seat Damage	2	Cushion only damaged	<a href="#">more</a>
V1713 — Center Front Armrest Damaged	0	No	<a href="#">more</a>
V1714 — Driver Seat Rotation	1	Forward apparent	<a href="#">more</a>
V1715 — Passenger Seat Rotation	1	Forward apparent	<a href="#">more</a>
V1716 — Driver Seat-back Type	3	Reclining	<a href="#">more</a>
V1717 — Passenger Seat-back Type	3	Reclining	<a href="#">more</a>
V1718 — Driver Seat-back Lock Type	1	Manual	<a href="#">more</a>
V1719 — Passenger Seat-back Lock Type	1	Manual	<a href="#">more</a>
V1720 — Driver Seat-back Lock Held	1	Yes	<a href="#">more</a>



V1721 — Passenger Seat-back Lock Held	1	Yes	<a href="#">more</a>
V1722 — Driver Recliner Mechanism Held	1	Yes	<a href="#">more</a>
V1723 — Passenger Recliner Mechanism Held	1	Yes	<a href="#">more</a>
V1724 — Driver Head Restraint Type	2	Integral	<a href="#">more</a>
V1725 — Passenger Head Restraint Type	2	Integral	<a href="#">more</a>
V1726 — Driver Head Rest Removed	8	Not applicable	<a href="#">more</a>
V1727 — Passenger Head Rest Removed	8	Not applicable	<a href="#">more</a>
V1728 — Driver Head Rest Adjustment	8	Not applicable	<a href="#">more</a>
V1729 — Passenger Head Rest Adjustment	8	Not applicable	<a href="#">more</a>
V1730 — Driver Head Rest Damage	0	None	<a href="#">more</a>
V1731 — Passenger Head Rest Damage	0	None	<a href="#">more</a>
V1732 — Driver Seat Adjustment Type	1	Manual	<a href="#">more</a>
V1733 — Passenger Seat Adjustment Type	1	Manual	<a href="#">more</a>
V1734 — Driver Seat Adjustment Provided	1	2-way	<a href="#">more</a>
V1735 — Passenger Seat Adjustment Provided	1	2-way	<a href="#">more</a>
V1736 — Driver Seat Adjuster Damage	2	Deformed (released/jammed)	<a href="#">more</a>
V1737 — Passenger Seat Adjuster Damage	0	None	<a href="#">more</a>
V1738 — Driver Seat Adjuster Separation	0	None	<a href="#">more</a>
V1739 — Passenger Seat Adjuster Separation	8	Not applicable	<a href="#">more</a>
V1740 — Driver Seat Pre-crash Position	3	Rearward	<a href="#">more</a>
V1741 — Passenger Seat Pre-crash Position	3	Rearward	<a href="#">more</a>
V1742 — Left Rear Seat Type	2	Folding	<a href="#">more</a>

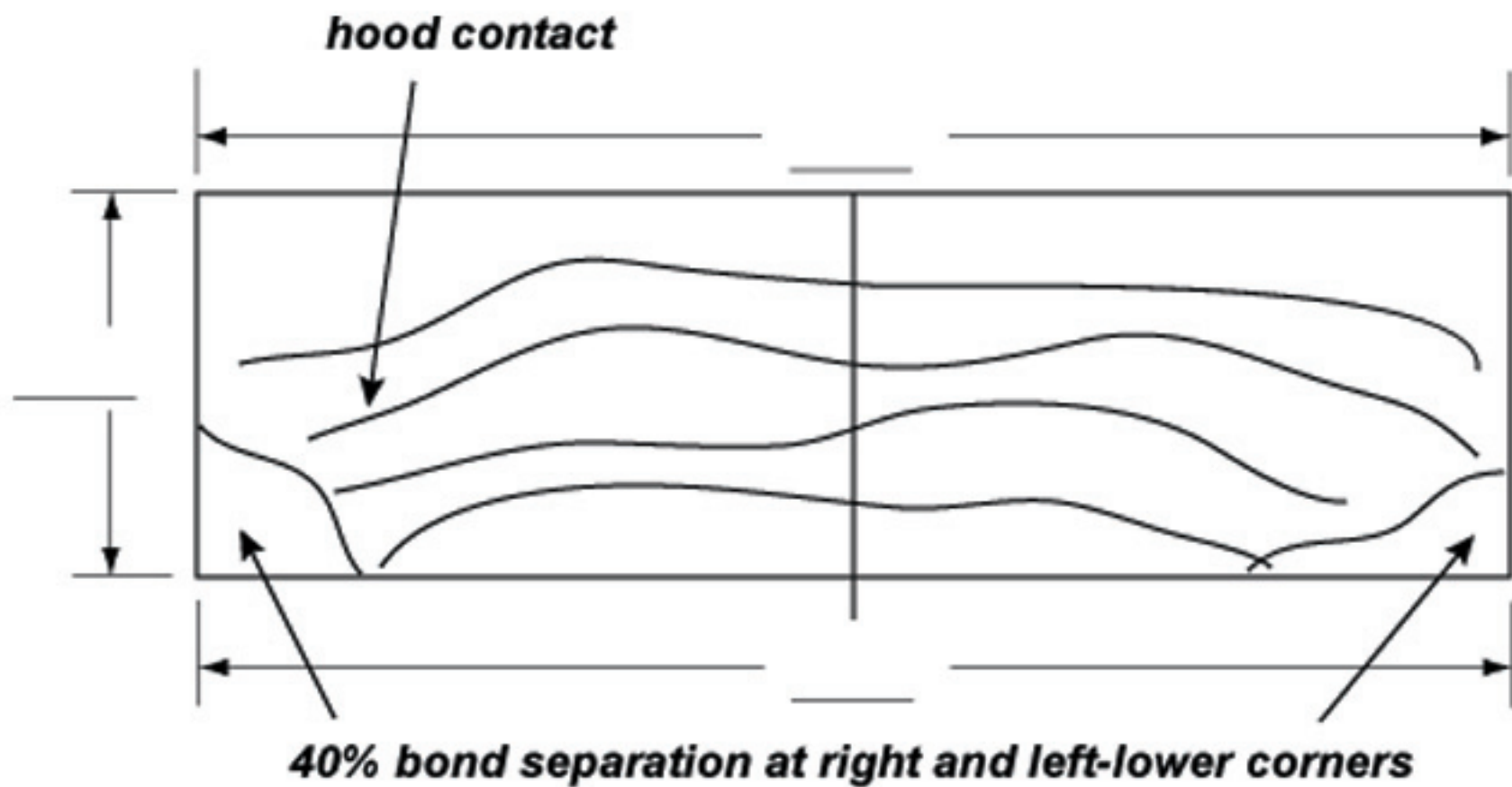
V1743 — Right Rear Seat Type	2	Folding	<a href="#">more</a>
V1744 — Left Rear Seat Damaged	1	Backrest only (damaged or loosened)	<a href="#">more</a>
V1745 — Right Rear Seat Damaged	1	Backrest only (damaged or loosened)	<a href="#">more</a>
V1746 — Center Rear Armrest Damaged	8	Not applicable (No Center Armrest)	<a href="#">more</a>
V1747 — Left Rear Seat-back Left Lock Equipped	1	Yes	<a href="#">more</a>
V1748 — Right Rear Seat-back Left Lock Equipped	8	Not applicable	<a href="#">more</a>
V1749 — Left Rear Seat-back Left Lock Held	3	Seat folded down	<a href="#">more</a>
V1750 — Right Rear Seat-back Left Lock Held	8	Not applicable	<a href="#">more</a>
V1751 — Left Rear Seat-back Right Lock Equipped	8	Not applicable	<a href="#">more</a>
V1752 — Right Rear Seat-back Right Lock Equipped	1	Yes	<a href="#">more</a>
V1753 — Left Rear Seat-back Right Lock Held	8	Not applicable	<a href="#">more</a>
V1754 — Right Rear Seat-back Right Lock Held	3	Seat folded down	<a href="#">more</a>
V1755 — Left 3rd Seat Equipped	0	No	<a href="#">more</a>
V1756 — Right 3rd Seat Equipped	0	No	<a href="#">more</a>
V1757 — Left 3rd Seat Backrest Damaged	8	Not applicable	<a href="#">more</a>
V1758 — Right 3rd Seat Backrest Damaged	8	Not applicable	<a href="#">more</a>
V1759 — Left 3rd Seat Cushion Damaged	8	Not applicable	<a href="#">more</a>
V1760 — Right 3rd Seat Cushion Damaged	8	Not applicable	<a href="#">more</a>
V1761 — Rear Head Restraints	0	Not Equipped (or removed)	<a href="#">more</a>

# MEASUREMENTS IN CENTIMETERS



WINDSHIELD MARK ON CASE VEHICLE:

***unknown***



1 = Definitely 2 = Probably 3 = Possible

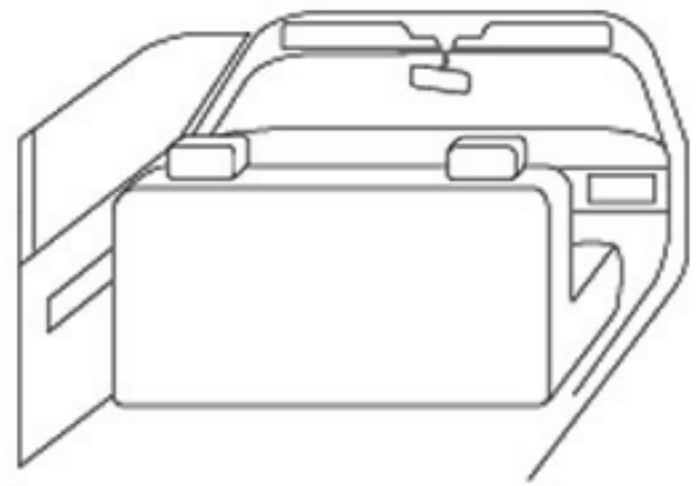
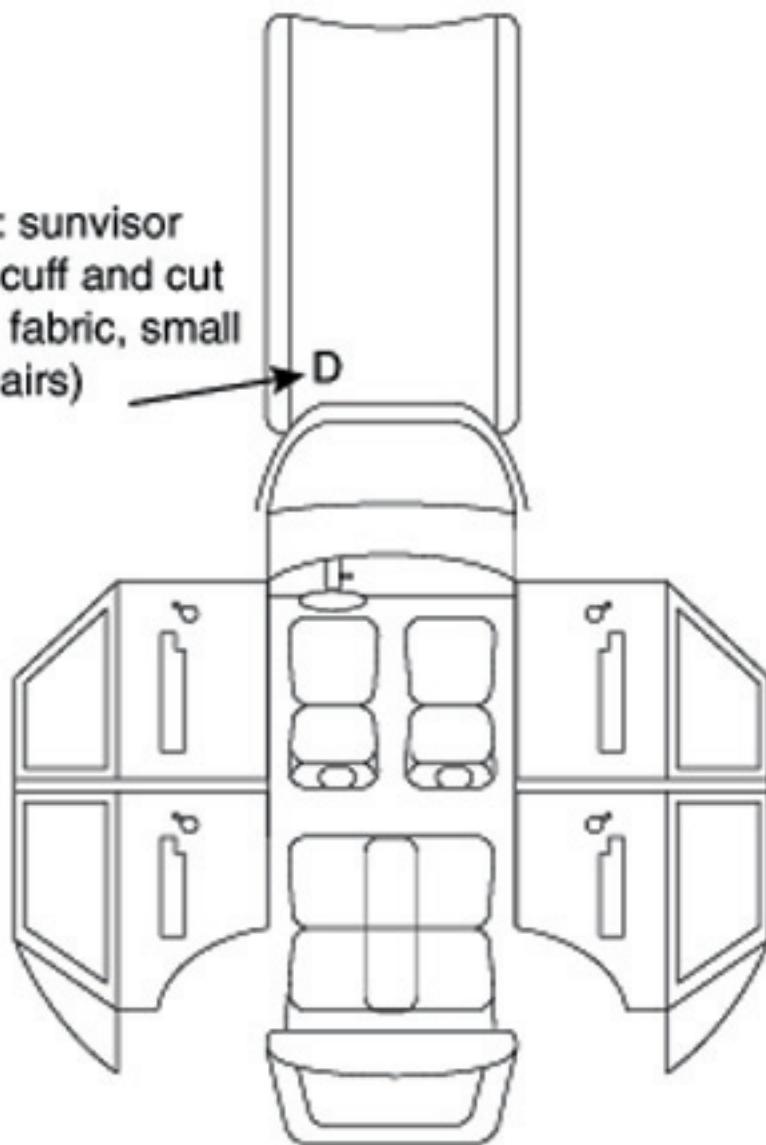
## INTRUSION IT-1

Location of Intrusion	Intruded Component	(All Measurements Are in Centimeters)				Dominant Crush Direction
		Comparison Value	–	Intruded Value	= Intrusion	
11	Toe pan	115	–	53	= 62	To rear
11	Left-front tire/wheel	73	–	37	= 36	To rear
11	Instrument panel	165	–	141	= 24	To rear
11	Floor		–		= 20	Up
11	A-pillar	155	–	142	= 13	To rear
12	Instrument panel	165	–	147	= 18	To rear
			–		=	
			–		=	
			–		=	

## OCCUPANT CONTACT WORKSHEET

Contact	Interior Component Contacted	Occupant No. if Known	Body Region if Known	Supporting Physical Evidence	Confidence Level of Contact Point
A	Upper 1/2 steering-wheel rim	1	Chest	10-cm forward deflection	1
B	mid panel	1	Arm/leg	Panel damaged, blood, scuff	1
C	Knee bolster	1	Arm/leg	Damage, scuffmark on left side	1
D	Sunvisor	1	Hand	Scuffmark, cut in fabric, small hair	1
E	Knee bolster	1	Right leg	Scuffmark	1
F	Brake pedal	1	Left	Bent to left	1
G	Toe pan	1	Feet	Displaced	1
H					
I					
J					

D: sunvisor  
(scuff and cut  
in fabric, small  
hairs)

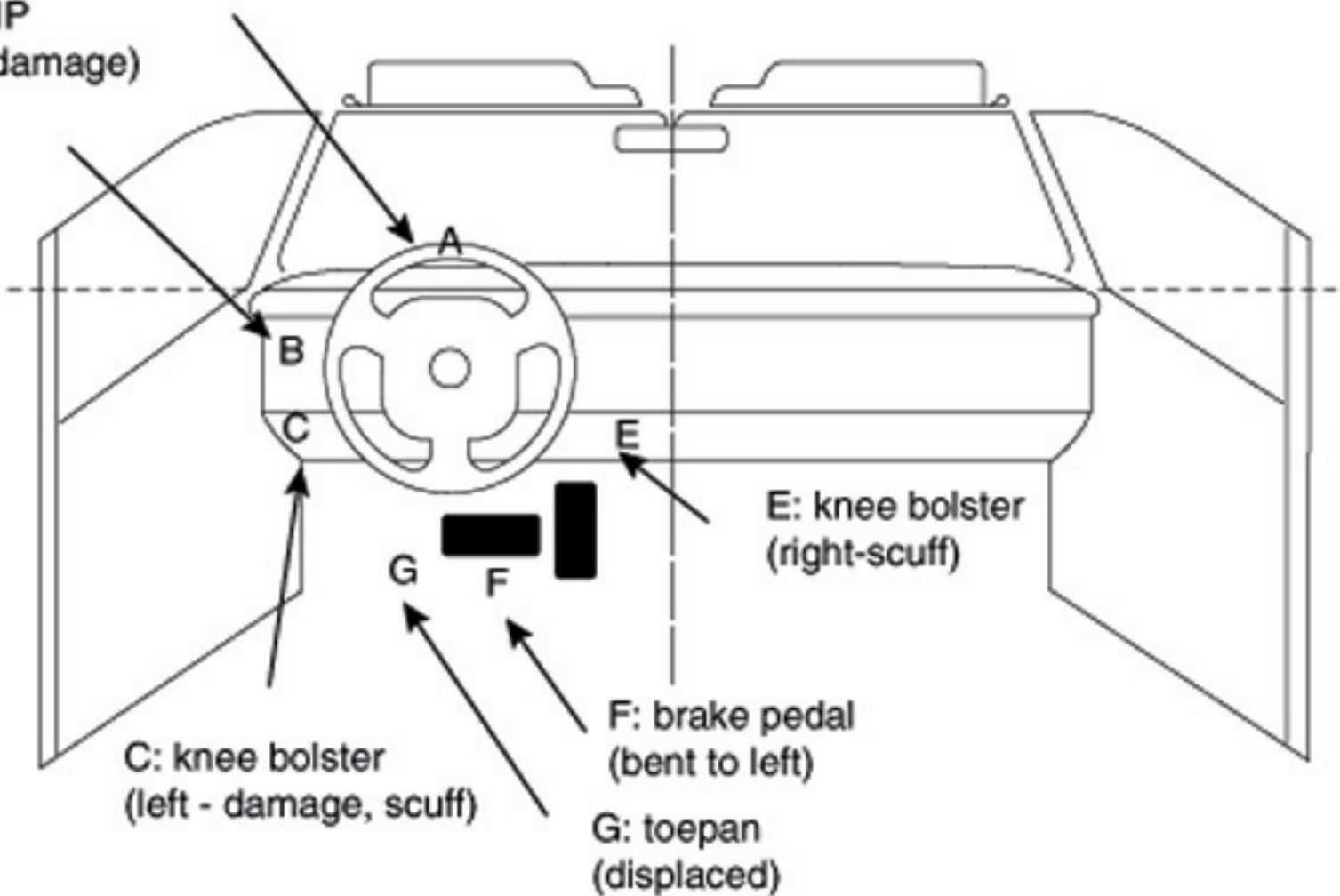


no evidence of driver belt use

steering-wheel pointed at 6:00 pm  
at vehicle inspection

A: steering-wheel rim  
(upper half has 10-cm forward deflection)

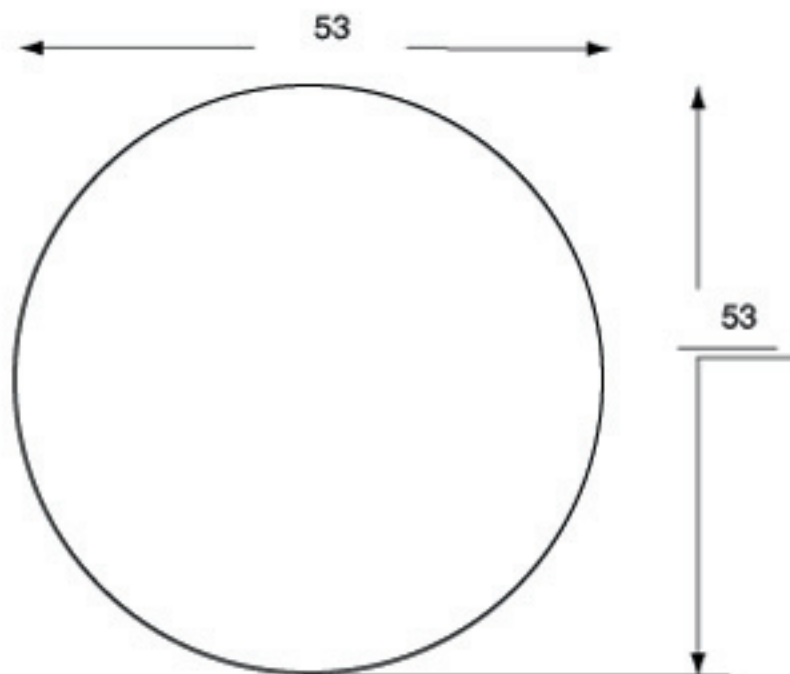
B: mid IP  
(scuff, damage)





## Driver Airbag

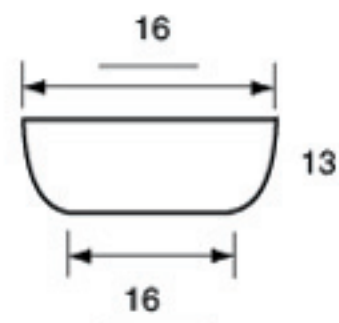
AIRBAG NUMBER ON DRIVER SIDE:



Vents: ☒ Y ☐ N  
if yes, how many: 1

Tethers: ☒ Y ☐ N  
if yes, how many: 1

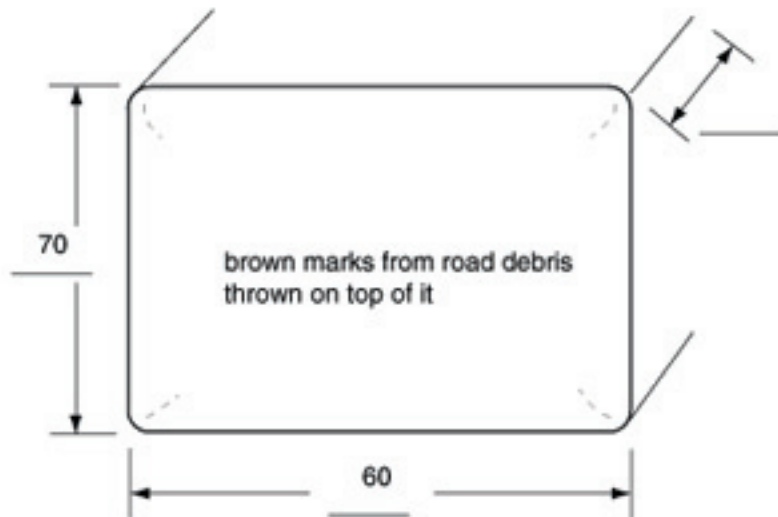
## Driver Airbag Doors



Single Door



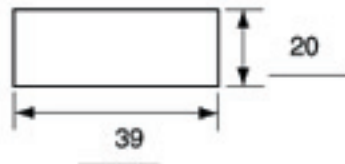
Passenger Airbag



Passenger Airbag Doors

H-Pattern

Single Door



Vents: ☒ Y ☐ N

If yes, how many: 1

Tethers: Y ☒ N

If yes, how many: \_\_\_\_\_

# Case # 361: Occupant # 1; Injury # 1

Variable Number and Name	Code Value	Code Description	Other Options
V2101 — Injury Number	01	Injury #1	<a href="#">more</a>
V2102 — 1st Prob Contact Area	31	Interior loose object	<a href="#">more</a>
V2103 — 2nd Prob Contact Area	00	No Contact/not applicable	<a href="#">more</a>
V2104 — Primary OIC -body Region	14	Neck	<a href="#">more</a>
V2105 — Primary OIC -aspect	18	Right	<a href="#">more</a>
V2106 — Primary OIC -lesion	01	Abrasion	<a href="#">more</a>
V2107 — Primary OIC -system/Organ	09	Integumentary	<a href="#">more</a>
V2108 — Primary OIC -severity	1	Minor	<a href="#">more</a>
V2109 — Primary OIC	NRAI 1	—	—
V2110 — Assoc OIC 1 -body Region	99	No injury	<a href="#">more</a>
V2111 — Assoc OIC 1 -aspect	99	No injury	<a href="#">more</a>
V2112 — Assoc OIC 1 -lesion	99	No injury	<a href="#">more</a>
V2113 — Assoc OIC 1 -system/Organ	99	No injury	<a href="#">more</a>
V2114 — Assoc OIC 1 -severity	9	Unknown	<a href="#">more</a>
V2115 — Assoc OIC 1	—	—	—

# Case # 361: Occupant # 1; Injury # 2

Variable Number and Name	Code Value	Code Description	Other Options
V2101 — Injury Number	02	Injury #2	<a href="#">more</a>
V2102 — 1st Prob Contact Area	31	Interior loose object	<a href="#">more</a>
V2103 — 2nd Prob Contact Area	00	No Contact/not applicable	<a href="#">more</a>
V2104 — Primary OIC -body Region	19	Shoulder	<a href="#">more</a>
V2105 — Primary OIC -aspect	18	Right	<a href="#">more</a>
V2106 — Primary OIC -lesion	03	Contusion	<a href="#">more</a>
V2107 — Primary OIC -system/Organ	09	Integumentary	<a href="#">more</a>
V2108 — Primary OIC -severity	1	Minor	<a href="#">more</a>
V2109 — Primary OIC	SRCI1	—	—
V2110 — Assoc OIC 1 -body Region	99	No injury	<a href="#">more</a>
V2111 — Assoc OIC 1 -aspect	99	No injury	<a href="#">more</a>
V2112 — Assoc OIC 1 -lesion	99	No injury	<a href="#">more</a>
V2113 — Assoc OIC 1 -system/Organ	99	No injury	<a href="#">more</a>
V2114 — Assoc OIC 1 -severity	9	Unknown	<a href="#">more</a>
V2115 — Assoc OIC 1	—	—	—

# Case # 361: Occupant # 1; Injury # 3

Variable Number and Name	Code Value	Code Description	Other Options
V2101 — Injury Number	03	Injury #3	<a href="#">more</a>
V2102 — 1st Prob Contact Area	31	Interior loose object	<a href="#">more</a>
V2103 — 2nd Prob Contact Area	00	No Contact/not applicable	<a href="#">more</a>
V2104 — Primary OIC -body Region	01	Arm (upper)	<a href="#">more</a>
V2105 — Primary OIC -aspect	18	Right	<a href="#">more</a>
V2106 — Primary OIC -lesion	03	Contusion	<a href="#">more</a>
V2107 — Primary OIC -system/Organ	09	Integumentary	<a href="#">more</a>
V2108 — Primary OIC -severity	1	Minor	<a href="#">more</a>
V2109 — Primary OIC	ARCI1	—	—
V2110 — Assoc OIC 1 -body Region	99	No injury	<a href="#">more</a>
V2111 — Assoc OIC 1 -aspect	99	No injury	<a href="#">more</a>
V2112 — Assoc OIC 1 -lesion	99	No injury	<a href="#">more</a>
V2113 — Assoc OIC 1 -system/Organ	99	No injury	<a href="#">more</a>
V2114 — Assoc OIC 1 -severity	9	Unknown	<a href="#">more</a>
V2115 — Assoc OIC 1	—	—	—

# Case # 361: Occupant # 1; Injury # 4

Variable Number and Name	Code Value	Code Description	Other Options
V2101 — Injury Number	04	Injury #4	<a href="#">more</a>
V2102 — 1st Prob Contact Area	87	Air cushion skin "airbag"	<a href="#">more</a>
V2103 — 2nd Prob Contact Area	00	No Contact/not applicable	<a href="#">more</a>
V2104 — Primary OIC -body Region	03	Chest	<a href="#">more</a>
V2105 — Primary OIC -aspect	02	Bilateral	<a href="#">more</a>
V2106 — Primary OIC -lesion	06	Fracture	<a href="#">more</a>
V2107 — Primary OIC -system/Organ	19	Skeletal	<a href="#">more</a>
V2108 — Primary OIC -severity	4	Severe	<a href="#">more</a>
V2109 — Primary OIC	CBFS4	—	—
V2110 — Assoc OIC 1 -body Region	99	No injury	<a href="#">more</a>
V2111 — Assoc OIC 1 -aspect	99	No injury	<a href="#">more</a>
V2112 — Assoc OIC 1 -lesion	99	No injury	<a href="#">more</a>
V2113 — Assoc OIC 1 -system/Organ	99	No injury	<a href="#">more</a>
V2114 — Assoc OIC 1 -severity	9	Unknown	<a href="#">more</a>
V2115 — Assoc OIC 1	—	—	—

# Case # 361: Occupant # 1; Injury # 5

Variable Number and Name	Code Value	Code Description	Other Options
V2101 — Injury Number	05	Injury #5	<a href="#">more</a>
V2102 — 1st Prob Contact Area	31	Interior loose object	<a href="#">more</a>
V2103 — 2nd Prob Contact Area	00	No Contact/not applicable	<a href="#">more</a>
V2104 — Primary OIC -body Region	03	Chest	<a href="#">more</a>
V2105 — Primary OIC -aspect	18	Right	<a href="#">more</a>
V2106 — Primary OIC -lesion	06	Fracture	<a href="#">more</a>
V2107 — Primary OIC -system/Organ	19	Skeletal	<a href="#">more</a>
V2108 — Primary OIC -severity	1	Minor	<a href="#">more</a>
V2109 — Primary OIC	CRFS1	—	—
V2110 — Assoc OIC 1 -body Region	99	No injury	<a href="#">more</a>
V2111 — Assoc OIC 1 -aspect	99	No injury	<a href="#">more</a>
V2112 — Assoc OIC 1 -lesion	99	No injury	<a href="#">more</a>
V2113 — Assoc OIC 1 -system/Organ	99	No injury	<a href="#">more</a>
V2114 — Assoc OIC 1 -severity	9	Unknown	<a href="#">more</a>
V2115 — Assoc OIC 1	—	—	—

# Case # 361: Occupant # 1; Injury # 6

Variable Number and Name	Code Value	Code Description	Other Options
V2101 — Injury Number	06	Injury #6	<a href="#">more</a>
V2102 — 1st Prob Contact Area	87	Air cushion skin "airbag"	<a href="#">more</a>
V2103 — 2nd Prob Contact Area	00	No Contact/not applicable	<a href="#">more</a>
V2104 — Primary OIC -body Region	03	Chest	<a href="#">more</a>
V2105 — Primary OIC -aspect	18	Right	<a href="#">more</a>
V2106 — Primary OIC -lesion	03	Contusion	<a href="#">more</a>
V2107 — Primary OIC -system/Organ	16	Pulmonary/lungs	<a href="#">more</a>
V2108 — Primary OIC -severity	3	Serious	<a href="#">more</a>
V2109 — Primary OIC	CRCP3	—	—
V2110 — Assoc OIC 1 -body Region	99	No injury	<a href="#">more</a>
V2111 — Assoc OIC 1 -aspect	99	No injury	<a href="#">more</a>
V2112 — Assoc OIC 1 -lesion	99	No injury	<a href="#">more</a>
V2113 — Assoc OIC 1 -system/Organ	99	No injury	<a href="#">more</a>
V2114 — Assoc OIC 1 -severity	9	Unknown	<a href="#">more</a>
V2115 — Assoc OIC 1	—	—	—

# Case # 361: Occupant # 1; Injury # 7

Variable Number and Name	Code Value	Code Description	Other Options
V2101 — Injury Number	07	Injury #7	<a href="#">more</a>
V2102 — 1st Prob Contact Area	31	Interior loose object	<a href="#">more</a>
V2103 — 2nd Prob Contact Area	00	No Contact/not applicable	<a href="#">more</a>
V2104 — Primary OIC -body Region	19	Shoulder	<a href="#">more</a>
V2105 — Primary OIC -aspect	18	Right	<a href="#">more</a>
V2106 — Primary OIC -lesion	06	Fracture	<a href="#">more</a>
V2107 — Primary OIC -system/Organ	19	Skeletal	<a href="#">more</a>
V2108 — Primary OIC -severity	2	Moderate	<a href="#">more</a>
V2109 — Primary OIC	SRFS2	—	—
V2110 — Assoc OIC 1 -body Region	99	No injury	<a href="#">more</a>
V2111 — Assoc OIC 1 -aspect	99	No injury	<a href="#">more</a>
V2112 — Assoc OIC 1 -lesion	99	No injury	<a href="#">more</a>
V2113 — Assoc OIC 1 -system/Organ	99	No injury	<a href="#">more</a>
V2114 — Assoc OIC 1 -severity	9	Unknown	<a href="#">more</a>
V2115 — Assoc OIC 1	—	—	—



# Case # 361: Occupant # 1; Injury # 8

Variable Number and Name	Code Value	Code Description	Other Options
V2101 — Injury Number	08	Injury #8	<a href="#">more</a>
V2102 — 1st Prob Contact Area	05	Instrument panel (specific area unknown)	<a href="#">more</a>
V2103 — 2nd Prob Contact Area	00	No Contact/not applicable	<a href="#">more</a>
V2104 — Primary OIC -body Region	23	Wrist/hand	<a href="#">more</a>
V2105 — Primary OIC -aspect	18	Right	<a href="#">more</a>
V2106 — Primary OIC -lesion	03	Contusion	<a href="#">more</a>
V2107 — Primary OIC -system/Organ	09	Integumentary	<a href="#">more</a>
V2108 — Primary OIC -severity	1	Minor	<a href="#">more</a>
V2109 — Primary OIC	WRCI1	—	—
V2110 — Assoc OIC 1 -body Region	99	No injury	<a href="#">more</a>
V2111 — Assoc OIC 1 -aspect	99	No injury	<a href="#">more</a>
V2112 — Assoc OIC 1 -lesion	99	No injury	<a href="#">more</a>
V2113 — Assoc OIC 1 -system/Organ	99	No injury	<a href="#">more</a>
V2114 — Assoc OIC 1 -severity	9	Unknown	<a href="#">more</a>
V2115 — Assoc OIC 1	—	—	—

# Case # 361: Occupant # 1; Injury # 9

Variable Number and Name	Code Value	Code Description	Other Options
V2101 — Injury Number	09	Injury #9	<a href="#">more</a>
V2102 — 1st Prob Contact Area	41	Unknown interior surface	<a href="#">more</a>
V2103 — 2nd Prob Contact Area	00	No Contact/not applicable	<a href="#">more</a>
V2104 — Primary OIC -body Region	01	Arm (upper)	<a href="#">more</a>
V2105 — Primary OIC -aspect	12	Left	<a href="#">more</a>
V2106 — Primary OIC -lesion	03	Contusion	<a href="#">more</a>
V2107 — Primary OIC -system/Organ	09	Integumentary	<a href="#">more</a>
V2108 — Primary OIC -severity	1	Minor	<a href="#">more</a>
V2109 — Primary OIC	ALCI1	—	—
V2110 — Assoc OIC 1 -body Region	99	No injury	<a href="#">more</a>
V2111 — Assoc OIC 1 -aspect	99	No injury	<a href="#">more</a>
V2112 — Assoc OIC 1 -lesion	99	No injury	<a href="#">more</a>
V2113 — Assoc OIC 1 -system/Organ	99	No injury	<a href="#">more</a>
V2114 — Assoc OIC 1 -severity	9	Unknown	<a href="#">more</a>
V2115 — Assoc OIC 1	—	—	—

# Case # 361: Occupant # 1; Injury #10

Variable Number and Name	Code Value	Code Description	Other Options
V2101 — Injury Number	10	Injury #10	<a href="#">more</a>
V2102 — 1st Prob Contact Area	31	Interior loose object	<a href="#">more</a>
V2103 — 2nd Prob Contact Area	00	No Contact/not applicable	<a href="#">more</a>
V2104 — Primary OIC -body Region	02	Back	<a href="#">more</a>
V2105 — Primary OIC -aspect	19	Superior/upper	<a href="#">more</a>
V2106 — Primary OIC -lesion	06	Fracture	<a href="#">more</a>
V2107 — Primary OIC -system/Organ	19	Skeletal	<a href="#">more</a>
V2108 — Primary OIC -severity	2	Moderate	<a href="#">more</a>
V2109 — Primary OIC	BSFS2	—	—
V2110 — Assoc OIC 1 -body Region	99	No injury	<a href="#">more</a>
V2111 — Assoc OIC 1 -aspect	99	No injury	<a href="#">more</a>
V2112 — Assoc OIC 1 -lesion	99	No injury	<a href="#">more</a>
V2113 — Assoc OIC 1 -system/Organ	99	No injury	<a href="#">more</a>
V2114 — Assoc OIC 1 -severity	9	Unknown	<a href="#">more</a>
V2115 — Assoc OIC 1	—	—	—

# Case # 361: Occupant # 1; Injury #11

Variable Number and Name	Code Value	Code Description	Other Options
V2101 — Injury Number	11	Injury #11	<a href="#">more</a>
V2102 — 1st Prob Contact Area	31	Interior loose object	<a href="#">more</a>
V2103 — 2nd Prob Contact Area	00	No Contact/not applicable	<a href="#">more</a>
V2104 — Primary OIC -body Region	02	Back	<a href="#">more</a>
V2105 — Primary OIC -aspect	09	Inferior/lower	<a href="#">more</a>
V2106 — Primary OIC -lesion	06	Fracture	<a href="#">more</a>
V2107 — Primary OIC -system/Organ	19	Skeletal	<a href="#">more</a>
V2108 — Primary OIC -severity	2	Moderate	<a href="#">more</a>
V2109 — Primary OIC	BIFS2	—	—
V2110 — Assoc OIC 1 -body Region	99	No injury	<a href="#">more</a>
V2111 — Assoc OIC 1 -aspect	99	No injury	<a href="#">more</a>
V2112 — Assoc OIC 1 -lesion	99	No injury	<a href="#">more</a>
V2113 — Assoc OIC 1 -system/Organ	99	No injury	<a href="#">more</a>
V2114 — Assoc OIC 1 -severity	9	Unknown	<a href="#">more</a>
V2115 — Assoc OIC 1	—	—	—

# Case # 361: Occupant # 1; Injury #12

Variable Number and Name	Code Value	Code Description	Other Options
V2101 — Injury Number	12	Injury #12	<a href="#">more</a>
V2102 — 1st Prob Contact Area	31	Interior loose object	<a href="#">more</a>
V2103 — 2nd Prob Contact Area	00	No Contact/not applicable	<a href="#">more</a>
V2104 — Primary OIC -body Region	16	Pelvic/hip	<a href="#">more</a>
V2105 — Primary OIC -aspect	18	Right	<a href="#">more</a>
V2106 — Primary OIC -lesion	03	Contusion	<a href="#">more</a>
V2107 — Primary OIC -system/Organ	09	Integumentary	<a href="#">more</a>
V2108 — Primary OIC -severity	1	Minor	<a href="#">more</a>
V2109 — Primary OIC	PRCI1	—	—
V2110 — Assoc OIC 1 -body Region	99	No injury	<a href="#">more</a>
V2111 — Assoc OIC 1 -aspect	99	No injury	<a href="#">more</a>
V2112 — Assoc OIC 1 -lesion	99	No injury	<a href="#">more</a>
V2113 — Assoc OIC 1 -system/Organ	99	No injury	<a href="#">more</a>
V2114 — Assoc OIC 1 -severity	9	Unknown	<a href="#">more</a>
V2115 — Assoc OIC 1	—	—	—

# Case # 361: Occupant # 1; Injury #13

Variable Number and Name	Code Value	Code Description	Other Options
V2101 — Injury Number	13	Injury #13	<a href="#">more</a>
V2102 — 1st Prob Contact Area	48	Knee restraint	<a href="#">more</a>
V2103 — 2nd Prob Contact Area	00	No Contact/not applicable	<a href="#">more</a>
V2104 — Primary OIC -body Region	16	Pelvic/hip	<a href="#">more</a>
V2105 — Primary OIC -aspect	18	Right	<a href="#">more</a>
V2106 — Primary OIC -lesion	26	Fracture with dislocation	<a href="#">more</a>
V2107 — Primary OIC -system/Organ	10	Joints	<a href="#">more</a>
V2108 — Primary OIC -severity	3	Serious	<a href="#">more</a>
V2109 — Primary OIC	PRZJ3	—	—
V2110 — Assoc OIC 1 -body Region	99	No injury	<a href="#">more</a>
V2111 — Assoc OIC 1 -aspect	99	No injury	<a href="#">more</a>
V2112 — Assoc OIC 1 -lesion	99	No injury	<a href="#">more</a>
V2113 — Assoc OIC 1 -system/Organ	99	No injury	<a href="#">more</a>
V2114 — Assoc OIC 1 -severity	9	Unknown	<a href="#">more</a>
V2115 — Assoc OIC 1	—	—	—

# Case # 361: Occupant # 1; Injury #14

Variable Number and Name	Code Value	Code Description	Other Options
V2101 — Injury Number	14	Injury #14	<a href="#">more</a>
V2102 — 1st Prob Contact Area	48	Knee restraint	<a href="#">more</a>
V2103 — 2nd Prob Contact Area	00	No Contact/not applicable	<a href="#">more</a>
V2104 — Primary OIC -body Region	16	Pelvic/hip	<a href="#">more</a>
V2105 — Primary OIC -aspect	16	Posterior/back	<a href="#">more</a>
V2106 — Primary OIC -lesion	06	Fracture	<a href="#">more</a>
V2107 — Primary OIC -system/Organ	19	Skeletal	<a href="#">more</a>
V2108 — Primary OIC -severity	3	Serious	<a href="#">more</a>
V2109 — Primary OIC	PPFS3	—	—
V2110 — Assoc OIC 1 -body Region	99	No injury	<a href="#">more</a>
V2111 — Assoc OIC 1 -aspect	99	No injury	<a href="#">more</a>
V2112 — Assoc OIC 1 -lesion	99	No injury	<a href="#">more</a>
V2113 — Assoc OIC 1 -system/Organ	99	No injury	<a href="#">more</a>
V2114 — Assoc OIC 1 -severity	9	Unknown	<a href="#">more</a>
V2115 — Assoc OIC 1	—	—	—

# Case # 361: Occupant # 1; Injury #15

Variable Number and Name	Code Value	Code Description	Other Options
V2101 — Injury Number	15	Injury #15	<a href="#">more</a>
V2102 — 1st Prob Contact Area	48	Knee restraint	<a href="#">more</a>
V2103 — 2nd Prob Contact Area	00	No Contact/not applicable	<a href="#">more</a>
V2104 — Primary OIC -body Region	20	Thigh	<a href="#">more</a>
V2105 — Primary OIC -aspect	18	Right	<a href="#">more</a>
V2106 — Primary OIC -lesion	21	Unknown	<a href="#">more</a>
V2107 — Primary OIC -system/Organ	01	Arteries	<a href="#">more</a>
V2108 — Primary OIC -severity	2	Moderate	<a href="#">more</a>
V2109 — Primary OIC	TRUA2	—	—
V2110 — Assoc OIC 1 -body Region	99	No injury	<a href="#">more</a>
V2111 — Assoc OIC 1 -aspect	99	No injury	<a href="#">more</a>
V2112 — Assoc OIC 1 -lesion	99	No injury	<a href="#">more</a>
V2113 — Assoc OIC 1 -system/Organ	99	No injury	<a href="#">more</a>
V2114 — Assoc OIC 1 -severity	9	Unknown	<a href="#">more</a>
V2115 — Assoc OIC 1	—	—	—



# Case # 361: Occupant # 1; Injury #16

Variable Number and Name	Code Value	Code Description	Other Options
V2101 — Injury Number	16	Injury #16	<a href="#">more</a>
V2102 — 1st Prob Contact Area	48	Knee restraint	<a href="#">more</a>
V2103 — 2nd Prob Contact Area	00	No Contact/not applicable	<a href="#">more</a>
V2104 — Primary OIC -body Region	16	Pelvic/hip	<a href="#">more</a>
V2105 — Primary OIC -aspect	16	Posterior/back	<a href="#">more</a>
V2106 — Primary OIC -lesion	06	Fracture	<a href="#">more</a>
V2107 — Primary OIC -system/Organ	19	Skeletal	<a href="#">more</a>
V2108 — Primary OIC -severity	2	Moderate	<a href="#">more</a>
V2109 — Primary OIC	PPFS2	—	—
V2110 — Assoc OIC 1 -body Region	99	No injury	<a href="#">more</a>
V2111 — Assoc OIC 1 -aspect	99	No injury	<a href="#">more</a>
V2112 — Assoc OIC 1 -lesion	99	No injury	<a href="#">more</a>
V2113 — Assoc OIC 1 -system/Organ	99	No injury	<a href="#">more</a>
V2114 — Assoc OIC 1 -severity	9	Unknown	<a href="#">more</a>
V2115 — Assoc OIC 1	—	—	—

# Case # 361: Occupant # 1; Injury #17

Variable Number and Name	Code Value	Code Description	Other Options
V2101 — Injury Number	17	Injury #17	<a href="#">more</a>
V2102 — 1st Prob Contact Area	31	Interior loose object	<a href="#">more</a>
V2103 — 2nd Prob Contact Area	00	No Contact/not applicable	<a href="#">more</a>
V2104 — Primary OIC -body Region	16	Pelvic/hip	<a href="#">more</a>
V2105 — Primary OIC -aspect	18	Right	<a href="#">more</a>
V2106 — Primary OIC -lesion	03	Contusion	<a href="#">more</a>
V2107 — Primary OIC -system/Organ	09	Integumentary	<a href="#">more</a>
V2108 — Primary OIC -severity	1	Minor	<a href="#">more</a>
V2109 — Primary OIC	PRCI1	—	—
V2110 — Assoc OIC 1 -body Region	99	No injury	<a href="#">more</a>
V2111 — Assoc OIC 1 -aspect	99	No injury	<a href="#">more</a>
V2112 — Assoc OIC 1 -lesion	99	No injury	<a href="#">more</a>
V2113 — Assoc OIC 1 -system/Organ	99	No injury	<a href="#">more</a>
V2114 — Assoc OIC 1 -severity	9	Unknown	<a href="#">more</a>
V2115 — Assoc OIC 1	—	—	—

# Case # 361: Occupant # 1; Injury #18

Variable Number and Name	Code Value	Code Description	Other Options
V2101 — Injury Number	18	Injury #18	<a href="#">more</a>
V2102 — 1st Prob Contact Area	48	Knee restraint	<a href="#">more</a>
V2103 — 2nd Prob Contact Area	00	No Contact/not applicable	<a href="#">more</a>
V2104 — Primary OIC -body Region	16	Pelvic/hip	<a href="#">more</a>
V2105 — Primary OIC -aspect	01	Anterior/front	<a href="#">more</a>
V2106 — Primary OIC -lesion	06	Fracture	<a href="#">more</a>
V2107 — Primary OIC -system/Organ	19	Skeletal	<a href="#">more</a>
V2108 — Primary OIC -severity	2	Moderate	<a href="#">more</a>
V2109 — Primary OIC	PAFS2	—	—
V2110 — Assoc OIC 1 -body Region	99	No injury	<a href="#">more</a>
V2111 — Assoc OIC 1 -aspect	99	No injury	<a href="#">more</a>
V2112 — Assoc OIC 1 -lesion	99	No injury	<a href="#">more</a>
V2113 — Assoc OIC 1 -system/Organ	99	No injury	<a href="#">more</a>
V2114 — Assoc OIC 1 -severity	9	Unknown	<a href="#">more</a>
V2115 — Assoc OIC 1	—	—	—

# Case # 361: Occupant # 1; Injury #19

Variable Number and Name	Code Value	Code Description	Other Options
V2101 — Injury Number	19	Injury #19	<a href="#">more</a>
V2102 — 1st Prob Contact Area	48	Knee restraint	<a href="#">more</a>
V2103 — 2nd Prob Contact Area	00	No Contact/not applicable	<a href="#">more</a>
V2104 — Primary OIC -body Region	11	Knee	<a href="#">more</a>
V2105 — Primary OIC -aspect	12	Left	<a href="#">more</a>
V2106 — Primary OIC -lesion	01	Abrasion	<a href="#">more</a>
V2107 — Primary OIC -system/Organ	09	Integumentary	<a href="#">more</a>
V2108 — Primary OIC -severity	1	Minor	<a href="#">more</a>
V2109 — Primary OIC	KLAI1	—	—
V2110 — Assoc OIC 1 -body Region	99	No injury	<a href="#">more</a>
V2111 — Assoc OIC 1 -aspect	99	No injury	<a href="#">more</a>
V2112 — Assoc OIC 1 -lesion	99	No injury	<a href="#">more</a>
V2113 — Assoc OIC 1 -system/Organ	99	No injury	<a href="#">more</a>
V2114 — Assoc OIC 1 -severity	9	Unknown	<a href="#">more</a>
V2115 — Assoc OIC 1	—	—	—

# Case # 361: Occupant # 1; Injury #20

Variable Number and Name	Code Value	Code Description	Other Options
V2101 — Injury Number	20	Injury #20	<a href="#">more</a>
V2102 — 1st Prob Contact Area	48	Knee restraint	<a href="#">more</a>
V2103 — 2nd Prob Contact Area	00	No Contact/not applicable	<a href="#">more</a>
V2104 — Primary OIC -body Region	11	Knee	<a href="#">more</a>
V2105 — Primary OIC -aspect	12	Left	<a href="#">more</a>
V2106 — Primary OIC -lesion	12	Laceration	<a href="#">more</a>
V2107 — Primary OIC -system/Organ	09	Integumentary	<a href="#">more</a>
V2108 — Primary OIC -severity	1	Minor	<a href="#">more</a>
V2109 — Primary OIC	KLLI1	—	—
V2110 — Assoc OIC 1 -body Region	99	No injury	<a href="#">more</a>
V2111 — Assoc OIC 1 -aspect	99	No injury	<a href="#">more</a>
V2112 — Assoc OIC 1 -lesion	99	No injury	<a href="#">more</a>
V2113 — Assoc OIC 1 -system/Organ	99	No injury	<a href="#">more</a>
V2114 — Assoc OIC 1 -severity	9	Unknown	<a href="#">more</a>
V2115 — Assoc OIC 1	—	—	—

# Case # 361: Occupant # 1; Injury #21

Variable Number and Name	Code Value	Code Description	Other Options
V2101 — Injury Number	21	Injury #21	<a href="#">more</a>
V2102 — 1st Prob Contact Area	91	Kickpanel	<a href="#">more</a>
V2103 — 2nd Prob Contact Area	28	Foot controls (including parking brake pedal)	<a href="#">more</a>
V2104 — Primary OIC -body Region	12	Leg (lower)	<a href="#">more</a>
V2105 — Primary OIC -aspect	12	Left	<a href="#">more</a>
V2106 — Primary OIC -lesion	01	Abrasion	<a href="#">more</a>
V2107 — Primary OIC -system/Organ	09	Integumentary	<a href="#">more</a>
V2108 — Primary OIC -severity	1	Minor	<a href="#">more</a>
V2109 — Primary OIC	LLAI1	—	—
V2110 — Assoc OIC 1 -body Region	99	No injury	<a href="#">more</a>
V2111 — Assoc OIC 1 -aspect	99	No injury	<a href="#">more</a>
V2112 — Assoc OIC 1 -lesion	99	No injury	<a href="#">more</a>
V2113 — Assoc OIC 1 -system/Organ	99	No injury	<a href="#">more</a>
V2114 — Assoc OIC 1 -severity	9	Unknown	<a href="#">more</a>
V2115 — Assoc OIC 1	—	—	—

# Case # 361: Occupant # 1; Injury #22

Variable Number and Name	Code Value	Code Description	Other Options
V2101 — Injury Number	22	Injury #22	<a href="#">more</a>
V2102 — 1st Prob Contact Area	91	Kickpanel	<a href="#">more</a>
V2103 — 2nd Prob Contact Area	28	Foot controls (including parking brake pedal)	<a href="#">more</a>
V2104 — Primary OIC -body Region	12	Leg (lower)	<a href="#">more</a>
V2105 — Primary OIC -aspect	12	Left	<a href="#">more</a>
V2106 — Primary OIC -lesion	03	Contusion	<a href="#">more</a>
V2107 — Primary OIC -system/Organ	09	Integumentary	<a href="#">more</a>
V2108 — Primary OIC -severity	1	Minor	<a href="#">more</a>
V2109 — Primary OIC	LLCI1	—	—
V2110 — Assoc OIC 1 -body Region	99	No injury	<a href="#">more</a>
V2111 — Assoc OIC 1 -aspect	99	No injury	<a href="#">more</a>
V2112 — Assoc OIC 1 -lesion	99	No injury	<a href="#">more</a>
V2113 — Assoc OIC 1 -system/Organ	99	No injury	<a href="#">more</a>
V2114 — Assoc OIC 1 -severity	9	Unknown	<a href="#">more</a>
V2115 — Assoc OIC 1	—	—	—

# Case # 361: Occupant # 1; Injury #23

Variable Number and Name	Code Value	Code Description	Other Options
V2101 — Injury Number	23	Injury #23	<a href="#">more</a>
V2102 — 1st Prob Contact Area	91	Kickpanel	<a href="#">more</a>
V2103 — 2nd Prob Contact Area	28	Foot controls (including parking brake pedal)	<a href="#">more</a>
V2104 — Primary OIC -body Region	12	Leg (lower)	<a href="#">more</a>
V2105 — Primary OIC -aspect	12	Left	<a href="#">more</a>
V2106 — Primary OIC -lesion	12	Laceration	<a href="#">more</a>
V2107 — Primary OIC -system/Organ	09	Integumentary	<a href="#">more</a>
V2108 — Primary OIC -severity	1	Minor	<a href="#">more</a>
V2109 — Primary OIC	LLLL11	—	—
V2110 — Assoc OIC 1 -body Region	99	No injury	<a href="#">more</a>
V2111 — Assoc OIC 1 -aspect	99	No injury	<a href="#">more</a>
V2112 — Assoc OIC 1 -lesion	99	No injury	<a href="#">more</a>
V2113 — Assoc OIC 1 -system/Organ	99	No injury	<a href="#">more</a>
V2114 — Assoc OIC 1 -severity	9	Unknown	<a href="#">more</a>
V2115 — Assoc OIC 1	—	—	—



# Case # 361: Occupant # 1; Injury #24

Variable Number and Name	Code Value	Code Description	Other Options
V2101 — Injury Number	24	Injury #24	<a href="#">more</a>
V2102 — 1st Prob Contact Area	40	Floor	<a href="#">more</a>
V2103 — 2nd Prob Contact Area	64	—	—
V2104 — Primary OIC -body Region	17	Ankle/foot	<a href="#">more</a>
V2105 — Primary OIC -aspect	12	Left	<a href="#">more</a>
V2106 — Primary OIC -lesion	06	Fracture	<a href="#">more</a>
V2107 — Primary OIC -system/Organ	19	Skeletal	<a href="#">more</a>
V2108 — Primary OIC -severity	2	Moderate	<a href="#">more</a>
V2109 — Primary OIC	QLFS2	—	—
V2110 — Assoc OIC 1 -body Region	99	No injury	<a href="#">more</a>
V2111 — Assoc OIC 1 -aspect	99	No injury	<a href="#">more</a>
V2112 — Assoc OIC 1 -lesion	99	No injury	<a href="#">more</a>
V2113 — Assoc OIC 1 -system/Organ	99	No injury	<a href="#">more</a>
V2114 — Assoc OIC 1 -severity	9	Unknown	<a href="#">more</a>
V2115 — Assoc OIC 1	—	—	—

# Case # 361: Occupant # 1; Injury #25

Variable Number and Name	Code Value	Code Description	Other Options
V2101 — Injury Number	25	Injury #25	<a href="#">more</a>
V2102 — 1st Prob Contact Area	40	Floor	<a href="#">more</a>
V2103 — 2nd Prob Contact Area	64	—	—
V2104 — Primary OIC -body Region	17	Ankle/foot	<a href="#">more</a>
V2105 — Primary OIC -aspect	12	Left	<a href="#">more</a>
V2106 — Primary OIC -lesion	06	Fracture	<a href="#">more</a>
V2107 — Primary OIC -system/Organ	19	Skeletal	<a href="#">more</a>
V2108 — Primary OIC -severity	1	Minor	<a href="#">more</a>
V2109 — Primary OIC	QLFS1	—	—
V2110 — Assoc OIC 1 -body Region	99	No injury	<a href="#">more</a>
V2111 — Assoc OIC 1 -aspect	99	No injury	<a href="#">more</a>
V2112 — Assoc OIC 1 -lesion	99	No injury	<a href="#">more</a>
V2113 — Assoc OIC 1 -system/Organ	99	No injury	<a href="#">more</a>
V2114 — Assoc OIC 1 -severity	9	Unknown	<a href="#">more</a>
V2115 — Assoc OIC 1	—	—	—

# Case # 361: Occupant # 1; Injury #26

Variable Number and Name	Code Value	Code Description	Other Options
V2101 — Injury Number	26	Injury #26	<a href="#">more</a>
V2102 — 1st Prob Contact Area	40	Floor	<a href="#">more</a>
V2103 — 2nd Prob Contact Area	64	—	—
V2104 — Primary OIC -body Region	17	Ankle/foot	<a href="#">more</a>
V2105 — Primary OIC -aspect	12	Left	<a href="#">more</a>
V2106 — Primary OIC -lesion	06	Fracture	<a href="#">more</a>
V2107 — Primary OIC -system/Organ	19	Skeletal	<a href="#">more</a>
V2108 — Primary OIC -severity	2	Moderate	<a href="#">more</a>
V2109 — Primary OIC	QLFS2	—	—
V2110 — Assoc OIC 1 -body Region	99	No injury	<a href="#">more</a>
V2111 — Assoc OIC 1 -aspect	99	No injury	<a href="#">more</a>
V2112 — Assoc OIC 1 -lesion	99	No injury	<a href="#">more</a>
V2113 — Assoc OIC 1 -system/Organ	99	No injury	<a href="#">more</a>
V2114 — Assoc OIC 1 -severity	9	Unknown	<a href="#">more</a>
V2115 — Assoc OIC 1	—	—	—

# Case # 361: Occupant # 1; Injury #27

Variable Number and Name	Code Value	Code Description	Other Options
V2101 — Injury Number	27	Injury #27	<a href="#">more</a>
V2102 — 1st Prob Contact Area	48	Knee restraint	<a href="#">more</a>
V2103 — 2nd Prob Contact Area	00	No Contact/not applicable	<a href="#">more</a>
V2104 — Primary OIC -body Region	12	Leg (lower)	<a href="#">more</a>
V2105 — Primary OIC -aspect	18	Right	<a href="#">more</a>
V2106 — Primary OIC -lesion	03	Contusion	<a href="#">more</a>
V2107 — Primary OIC -system/Organ	09	Integumentary	<a href="#">more</a>
V2108 — Primary OIC -severity	1	Minor	<a href="#">more</a>
V2109 — Primary OIC	LRCI1	—	—
V2110 — Assoc OIC 1 -body Region	99	No injury	<a href="#">more</a>
V2111 — Assoc OIC 1 -aspect	99	No injury	<a href="#">more</a>
V2112 — Assoc OIC 1 -lesion	99	No injury	<a href="#">more</a>
V2113 — Assoc OIC 1 -system/Organ	99	No injury	<a href="#">more</a>
V2114 — Assoc OIC 1 -severity	9	Unknown	<a href="#">more</a>
V2115 — Assoc OIC 1	—	—	—

# Case # 361: Occupant # 1; Injury #28

Variable Number and Name	Code Value	Code Description	Other Options
V2101 — Injury Number	28	Injury #28	<a href="#">more</a>
V2102 — 1st Prob Contact Area	48	Knee restraint	<a href="#">more</a>
V2103 — 2nd Prob Contact Area	00	No Contact/not applicable	<a href="#">more</a>
V2104 — Primary OIC -body Region	12	Leg (lower)	<a href="#">more</a>
V2105 — Primary OIC -aspect	18	Right	<a href="#">more</a>
V2106 — Primary OIC -lesion	01	Abrasion	<a href="#">more</a>
V2107 — Primary OIC -system/Organ	09	Integumentary	<a href="#">more</a>
V2108 — Primary OIC -severity	1	Minor	<a href="#">more</a>
V2109 — Primary OIC	LRAI1	—	—
V2110 — Assoc OIC 1 -body Region	99	No injury	<a href="#">more</a>
V2111 — Assoc OIC 1 -aspect	99	No injury	<a href="#">more</a>
V2112 — Assoc OIC 1 -lesion	99	No injury	<a href="#">more</a>
V2113 — Assoc OIC 1 -system/Organ	99	No injury	<a href="#">more</a>
V2114 — Assoc OIC 1 -severity	9	Unknown	<a href="#">more</a>
V2115 — Assoc OIC 1	—	—	—

# Case # 361: Occupant # 1; Injury #29

Variable Number and Name	Code Value	Code Description	Other Options
V2101 — Injury Number	29	Injury #29	<a href="#">more</a>
V2102 — 1st Prob Contact Area	40	Floor	<a href="#">more</a>
V2103 — 2nd Prob Contact Area	00	No Contact/not applicable	<a href="#">more</a>
V2104 — Primary OIC -body Region	17	Ankle/foot	<a href="#">more</a>
V2105 — Primary OIC -aspect	18	Right	<a href="#">more</a>
V2106 — Primary OIC -lesion	03	Contusion	<a href="#">more</a>
V2107 — Primary OIC -system/Organ	09	Integumentary	<a href="#">more</a>
V2108 — Primary OIC -severity	1	Minor	<a href="#">more</a>
V2109 — Primary OIC	QRCI1	—	—
V2110 — Assoc OIC 1 -body Region	99	No injury	<a href="#">more</a>
V2111 — Assoc OIC 1 -aspect	99	No injury	<a href="#">more</a>
V2112 — Assoc OIC 1 -lesion	99	No injury	<a href="#">more</a>
V2113 — Assoc OIC 1 -system/Organ	99	No injury	<a href="#">more</a>
V2114 — Assoc OIC 1 -severity	9	Unknown	<a href="#">more</a>
V2115 — Assoc OIC 1	—	—	—

# Case # 361: Occupant # 1

Variable Number and Name	Code Value	Code Description	Other Options
V2001 — Occupant Number	01	Occupant #1	<a href="#">more</a>
V2002 — Occupant Role At 1st Impact	1	Motor vehicle driver	<a href="#">more</a>
V2003 — Occupant Position -row	1	1st row	<a href="#">more</a>
V2004 — Occupant Position -lateral	1	Left	<a href="#">more</a>
V2005 — Occupant Position -posture	10	Sitting on seat	<a href="#">more</a>
V2006 — Occupant Age In Years	23	—	—
V2007 — Occupant Age In Months	25	25 months or older	<a href="#">more</a>
V2008 — Occupant Mass	082 kg	—	—
V2009 — Occupant Height	185 cm	—	—
V2010 — Occupant Sex	1	Male	<a href="#">more</a>
V2011 — Occupant Treatment/Mortality	04	Hospitalized over 24 hrs or for significant treatment	<a href="#">more</a>
V2012 — Injury Severity Score	29	—	—
V2013 — Non-impact Med Condition	0	None	<a href="#">more</a>
V2014 — Police Injury Severity	7	Non-fatal Injury, severity unknown	<a href="#">more</a>
V2015 — Active Restraint System	3	Both lap belt and shoulder harness	<a href="#">more</a>
V2016 — Active Restraint Usage	0	None (available but not used)	<a href="#">more</a>
V2017 — Passive Restraint System	1	Air bag installed	<a href="#">more</a>
V2018 — Passive Restraint Usage	2	Air bag deployed	<a href="#">more</a>
V2019 — Child Seat Type	88	Not applicable (adult or older child)	<a href="#">more</a>
V2020 — Occupant Ejection Degree	0	None	<a href="#">more</a>
V2021 — Occupant Ejection Area	98	Not applicable (not ejected)	<a href="#">more</a>
V2022 — Highest OIC Severity	4	Severe	<a href="#">more</a>

V2023 — Head Restraint Available	1	Equipped	<a href="#">more</a>
V2024 — Occupant Eyewear	0	None	<a href="#">more</a>
V2025 — Source of Occupant Info	1	Hospital	<a href="#">more</a>















3411073X

422-03

Jeep









3411073X

4-22-03

Jeep













3411073X

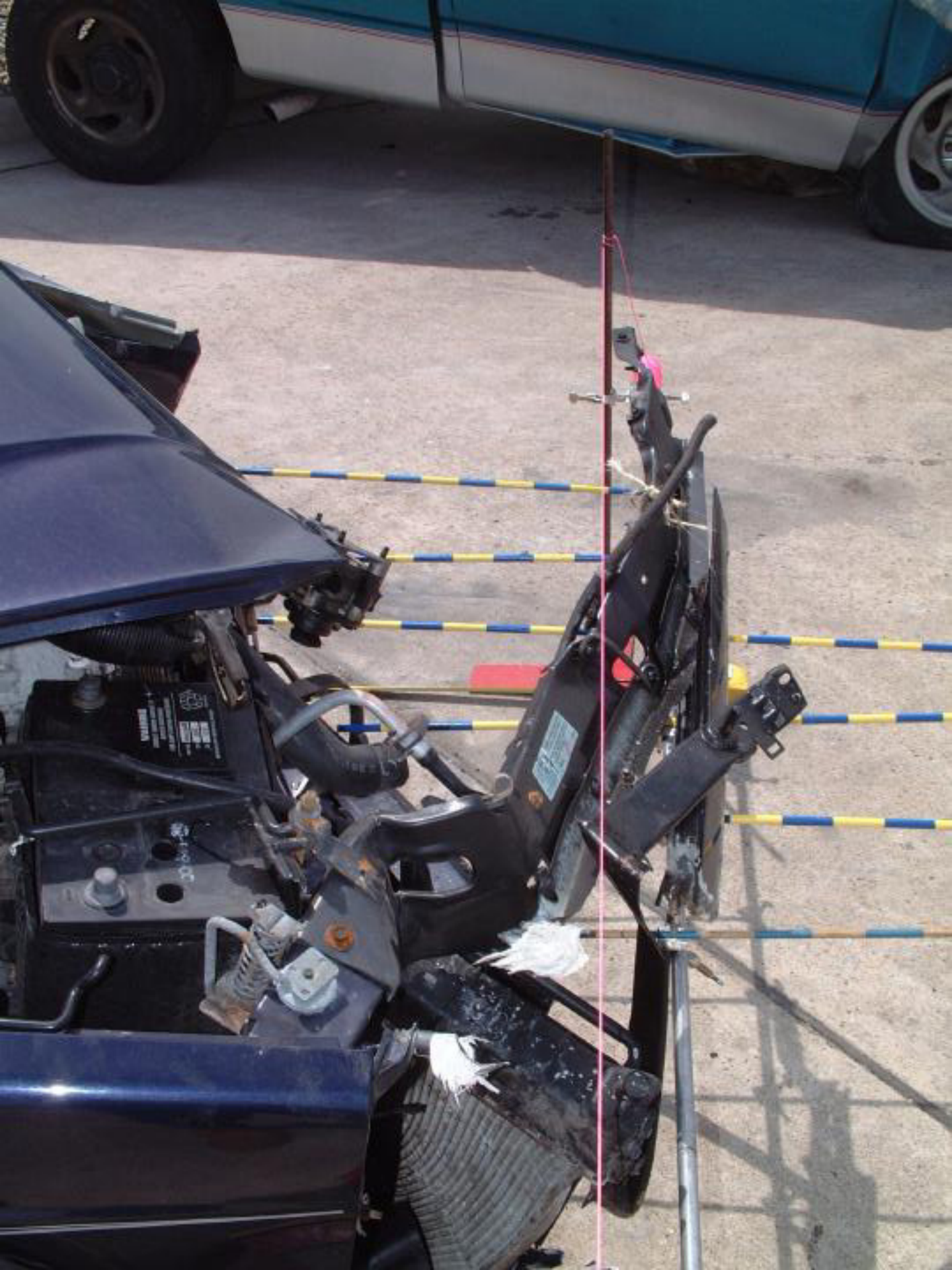
R 4-22-03

Jeep





























4-22-03





3411073X

R 4-22-03





































4x4

Jeep

MAZDA LR







WRANGLER  
RADIAL  
LR  
GOODYEAR





3411073X

R 4-22-03

Jeep





3411073X

R-4-22-03

Jeep























Jeep

4DL

4-16-03  
112-289  
(10)

THE  
U.S.  
NAVY



























THIS LABEL MUST BE  
PLACED ON THE TOP OF THE  
UNIT. IT MUST BE PLACED ON THE  
UNIT WITH THE LABEL SIDE UP.  
DO NOT REMOVE THIS LABEL.  
IF THE LABEL IS REMOVED, THE  
UNIT WILL BE REJECTED.





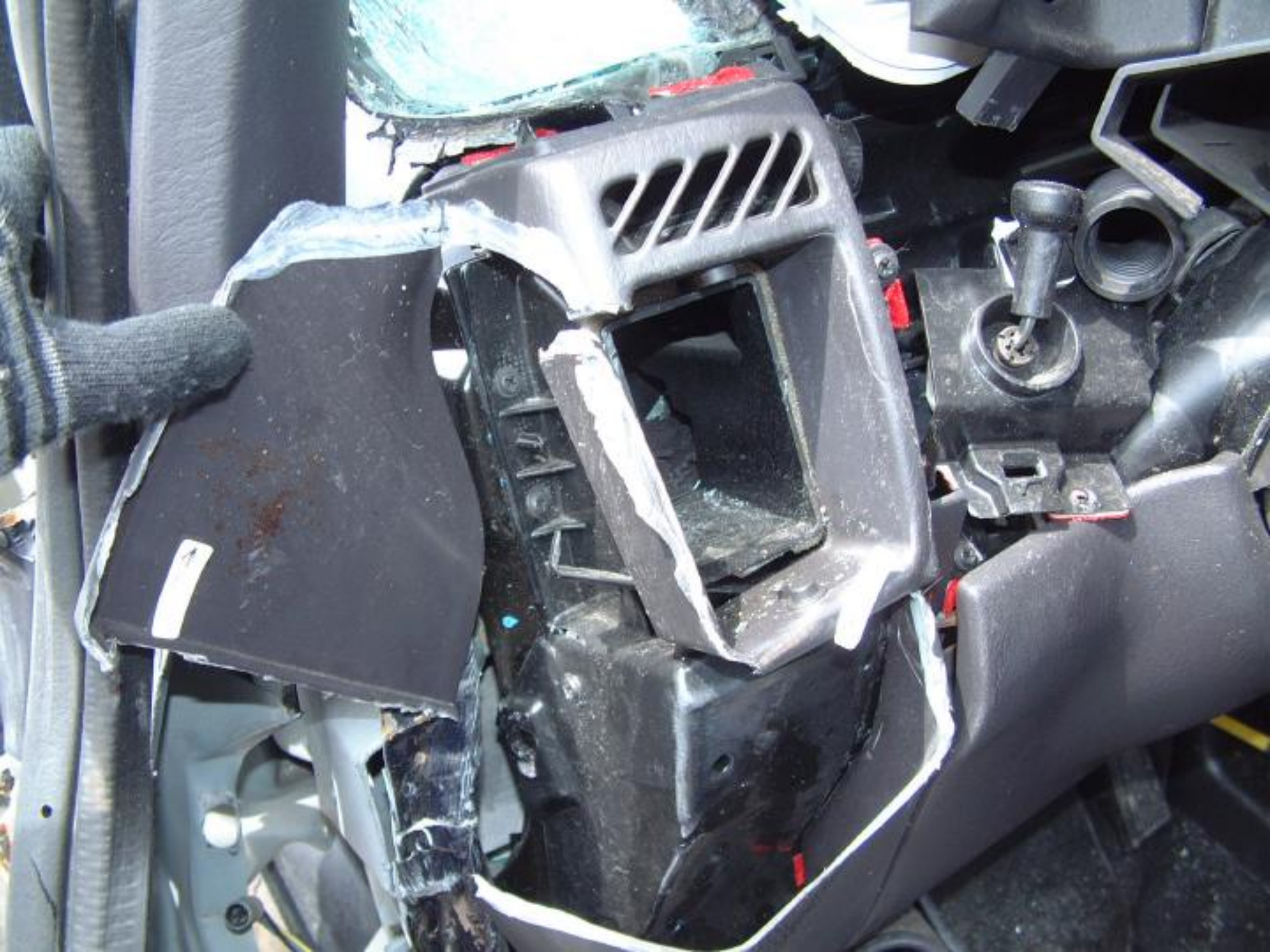










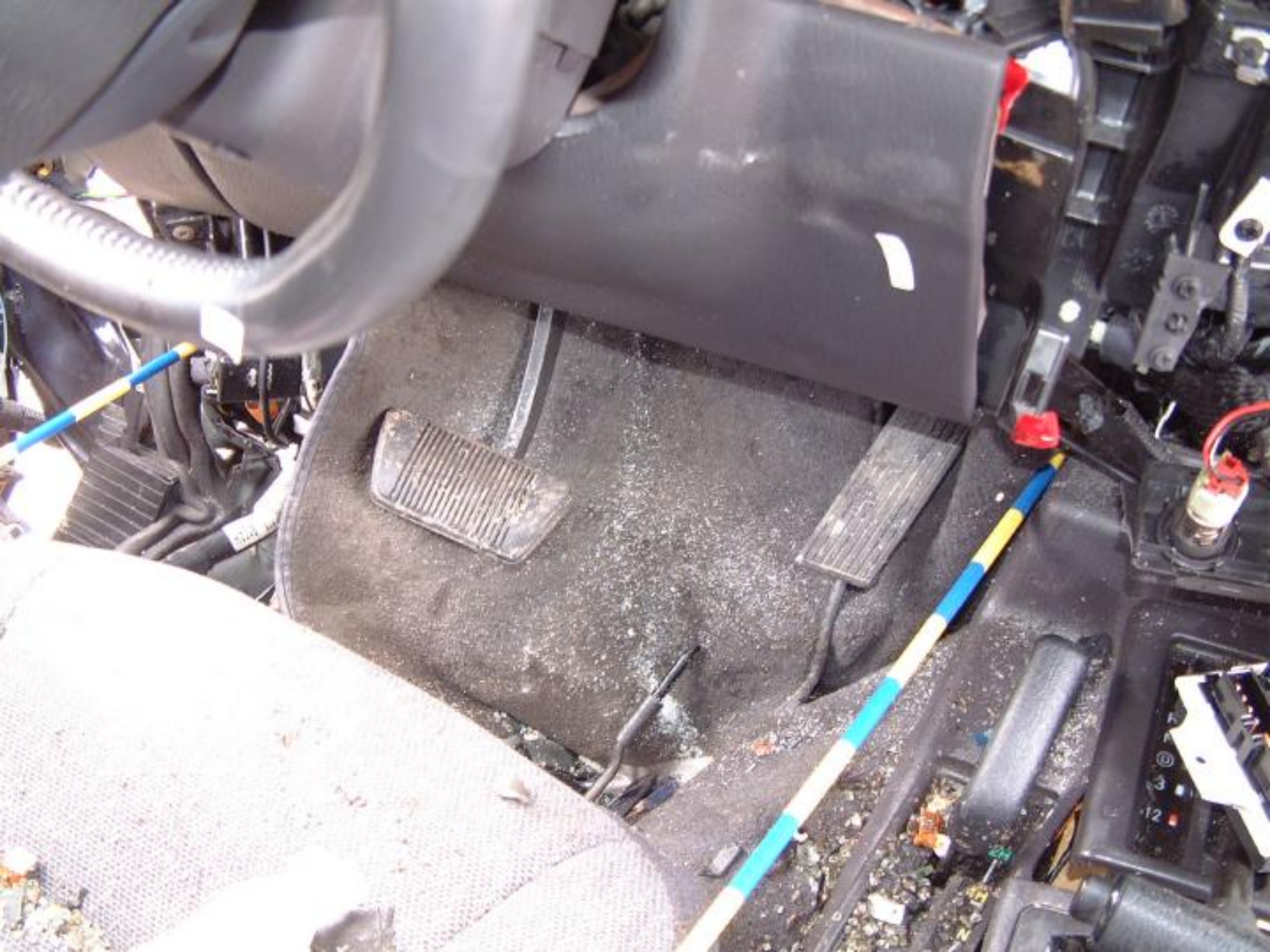
































**AIR BAG WARNING**  
DO NOT COVER





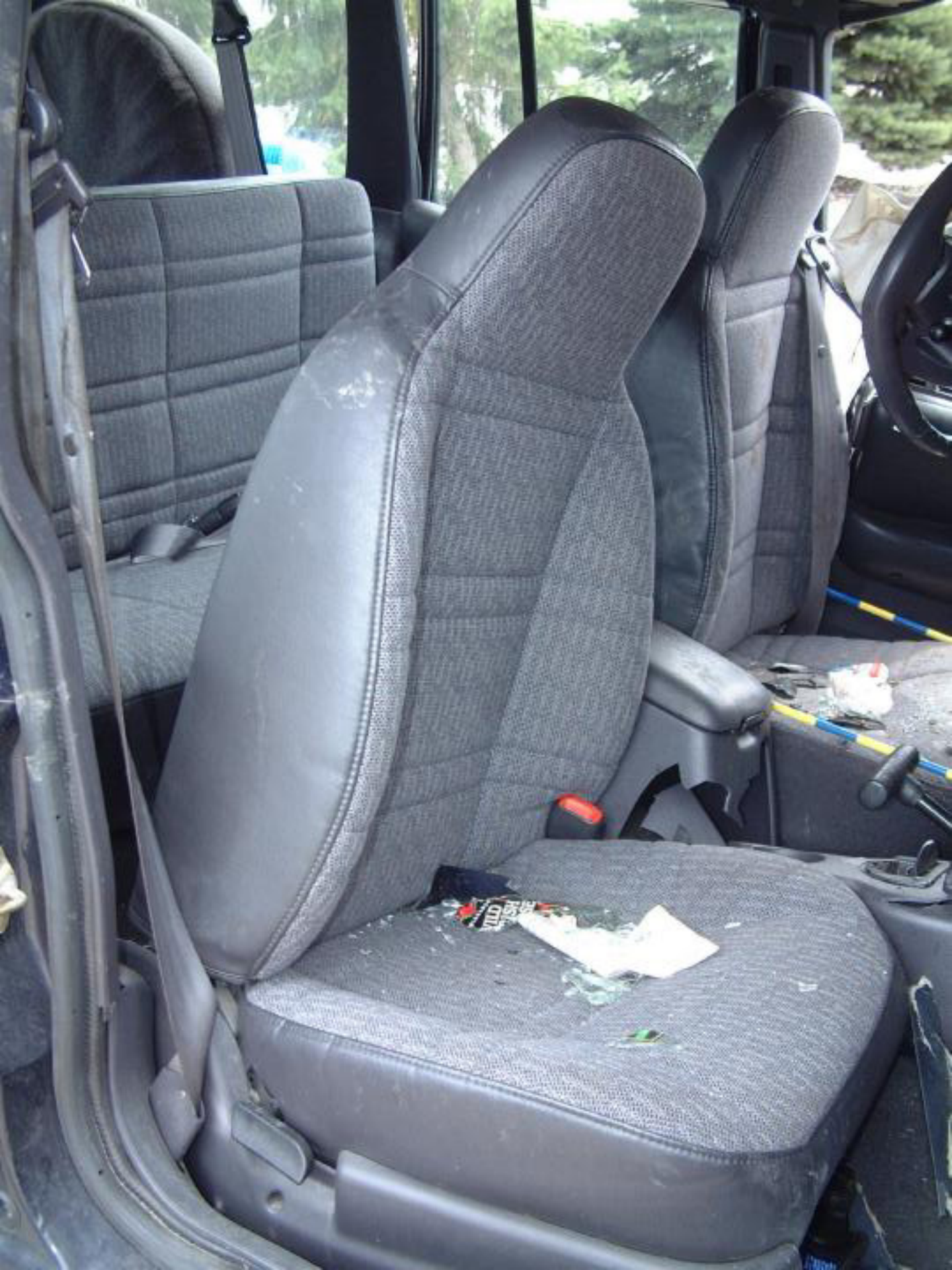










































E15213 B3





E15213 B3



A close-up photograph of a seatbelt buckle. A grey fabric seatbelt strap is inserted into the top of a dark, textured plastic buckle. Below the plastic housing is a metal plate with the engraving "AL393 421". The buckle is attached to a dark, textured fabric surface, likely a car seat.

AL393 421







































